

Earth and Sand Filters Partial Drain Using Equipment

Dilution Is The Solution



3 way check valve

Step 1: Turn off Pool

Step 2: Turn off all skimmers from valves at equipment, noting the position of the valves, Pull water only from bottom drain.

Step 3: For Earth and Sand filters (filters with a multiport valve), set the multiport valve to the “waste” setting.

Step 4: Roll’ out backwash hose.

Step 5: Turn on pump and allow the water to drain through the backwash hose, be careful of placement; you are draining a large amount of water that can flood if not directed to an area with sufficient drainage.

Step 6: Allow the water to drop no more than 3-4 inches below returns (the small eyelets where water shoots back into the pool).

Step 7: Turn off pool

Step 8: Put system back into “Filter” position on multiport valve.

Step 9: Turn on Pool

Step 10: Begin filling pool as System is running, stop filling when water reaches normal operating level.

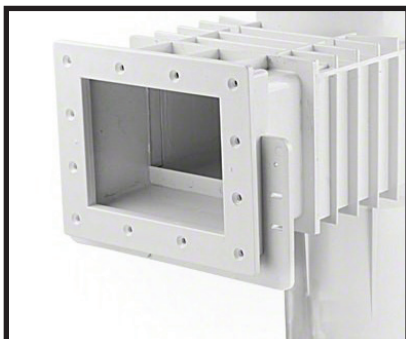
The number of drains will vary between pools and situations depending on the Levels of CVA, TDS, or the severity of your chlorine demand

*****Leave Auto cover open during entire process*****

***** Avoid performing partial drains during large rains or flood advisories*****



Multi-Port Valve



Standard Skimmer

