



Family fun in the sun, since 1976.



OPTIONS CATALOG

— *for* —

POOLS AND SPAS



DEAR FUTURE CUSTOMER



At Caribbean Pools, Inc., we offer in-ground swimming pools adaptable to any backyard landscape. Choose from traditional shapes or freeform designs, and let us help you create the oasis you've been dreaming of.

If you're looking to enhance your poolscape, check out our extensive selection of special options, ranging from unique water features to the perfect lighting for any pool or spa. Along with our extensive selection of the ultimate in-pool and spa products, you'll find an experienced and motivated Customer Service staff always happy to help.

We know individuality is important, which is why we pay special attention to the interests of each customer throughout the entire design and development process. From the minute you walk through our door, we'll have your best interests in mind. Founded not only on excellent customer service, but also on the principles of hard work and a focused attitude, Caribbean Pools, Inc. has a long list of satisfied customers.

Please use this options catalog to aid you in designing your backyard oasis. Should you have any questions along the way, feel free to call one of our staff members or your salesperson.

Thank you for considering us to install your new inground pool!

Sincerely,

The Caribbean Pools Family



TABLE OF CONTENTS

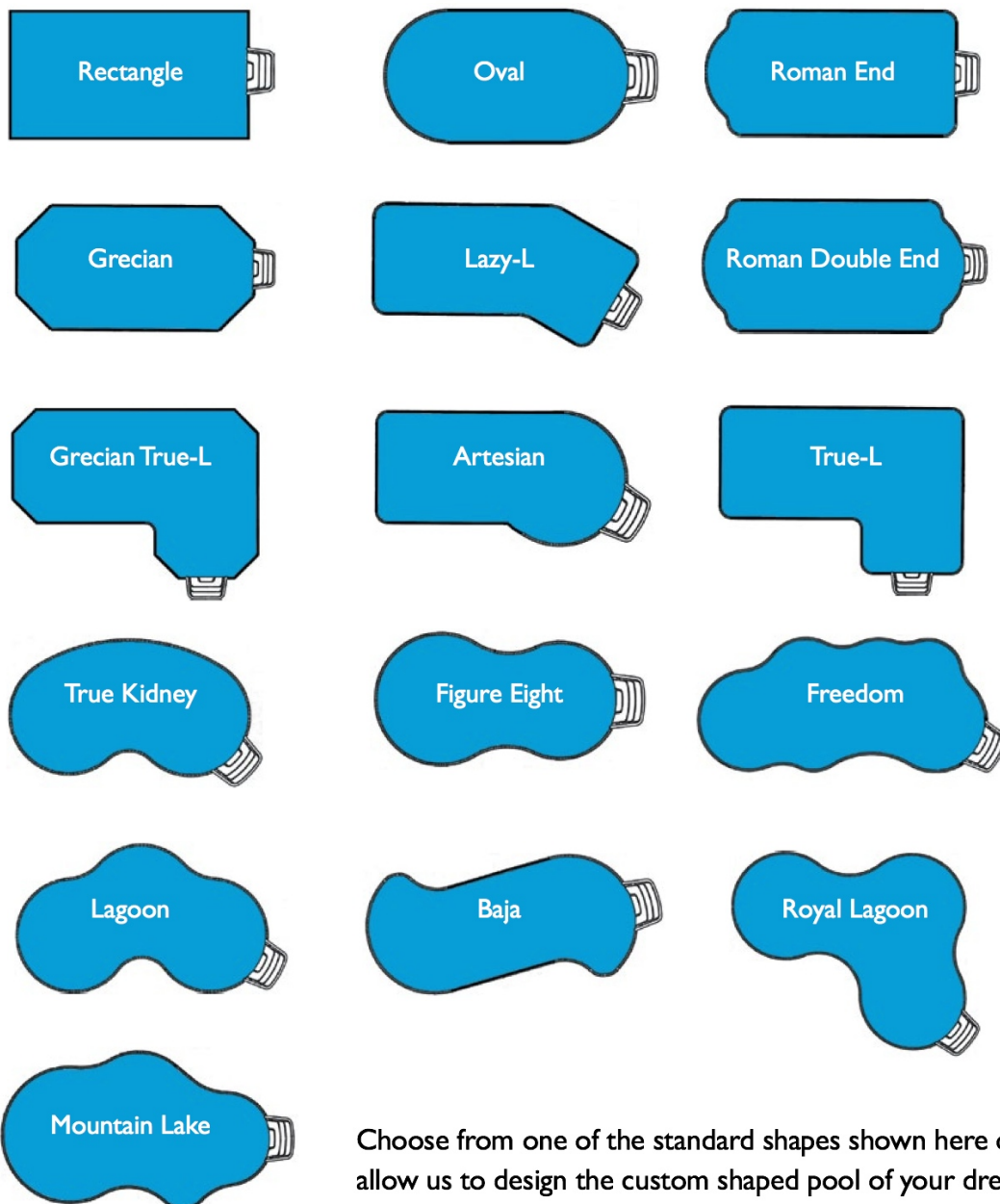
** Click on the page number
to go directly to the page.*

| | |
|----------------------------------|----|
| Types of Pools We Install | 4 |
| Backyard Design Services | 8 |
| Construction Process | 10 |
| Decking Options | 12 |
| Coping Options | 13 |
| Entrance, Exit, & Entertaining | 14 |
| Cover Options | 19 |
| Equipment | 22 |
| Automation | 28 |
| Water / Fire / Lighting Features | 30 |
| Sports / Exercise | 36 |
| Relaxing | 38 |
| Slides | 40 |
| Diveboards | 41 |
| Hot Tubs & Spas | 42 |
| Planning Ahead (rough ins) | 46 |
| Gazebos / Pergolas | 47 |
| Outdoor Fireplaces | 48 |
| Outdoor Kitchens | 49 |
| Big Green Egg | 50 |
| Caring for Your Pool | 51 |
| Finance Options | 54 |





VINYL POOL SHAPES



Choose from one of the standard shapes shown here or allow us to design the custom shaped pool of your dreams.





VINYL POOL LINERS

Vinyl is luxurious pool surface. It's soft, smooth texture alleviates the rough effects of other surfaces and allows you to create a designer look for your backyard escape. Visit plastimayd.com to view designs in a simulated pool.



LIGHT SERIES

Subtle and soothing tones hinting at the light blues of the Caribbean Islands. Select patterns from the lighter side of things.

RICH SERIES

Vibrant colors inspired by luxurious oceanfront lifestyles. A collection of patterns for seaside elegance at home.

DEEP SERIES

Bold and dramatic dark blues with striking patterns, similar to the serene beauty of a lake side retreat. Select patterns of sophistication.

Once you've narrowed down your pattern selections, consider if you would like to coordinate matching stairs and benches with our PosiTrac™ line, which thickness of vinyl is best for you.

27

PREMIUM

A 27 mil wall and floor is our most heavy-duty liner configuration. A popular choice in climates with freeze and thaw cycles – or if you want the peace of mind to know that you've selected the best protection against the elements.

27
20

PERMAWALL™

PermaWall is the combination of a 27 mil wall with a 20mil floor. This creative combo puts the strength of 27 mil where you need it most, providing both performance and affordability.

20

CLASSIC

Our classic all 20 mil liners are precision crafted from the same premium vinyl that is used throughout our high performance products. This lighter weight, highly durable product is an excellent choice while still meeting budget restrictions.

POSI

POSI-TRAC™

Our Posi-Trac materials are textured vinyl that provide additional traction to high traffic areas such as stairs, benches or sun ledges. Available in a variety of solid colors and printed patterns to match or compliment your personalized pool interior.



PLASTIMAYD
Precision Crafted Pool Liners



FIBERGLASS POOLS



Natural



Custom



Rectangle



Kidney



Lap Pools



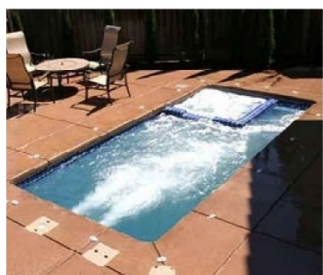
Classic



FreeForm



Spas



Swim Spas



Tanning Ledges

Choosing a Blue Hawaiian Fiberglass Pool is more than creating a place for swimming and fun. It is a solid investment in your property and its value, and a delightful long-term addition to your lifestyle. Your decision to purchase a Blue Hawaiian Fiberglass Pool means many years of family enjoyment including healthy exercise in a state-of-the-art product that combines long-lasting durability with aesthetically pleasing design.





Blue Hawaiian®

Fiberglass Pools



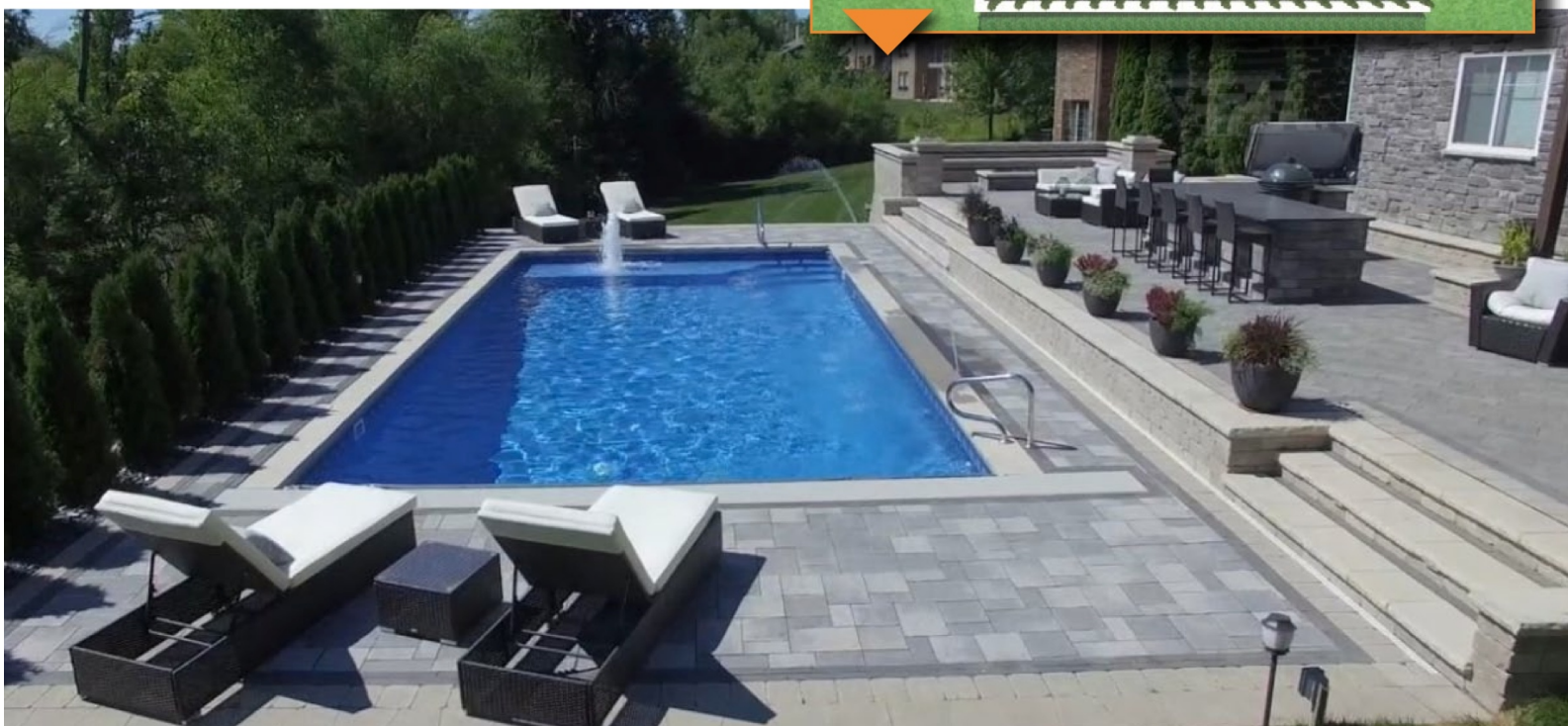
[See more information](#)





BACKYARD DESIGN SERVICES

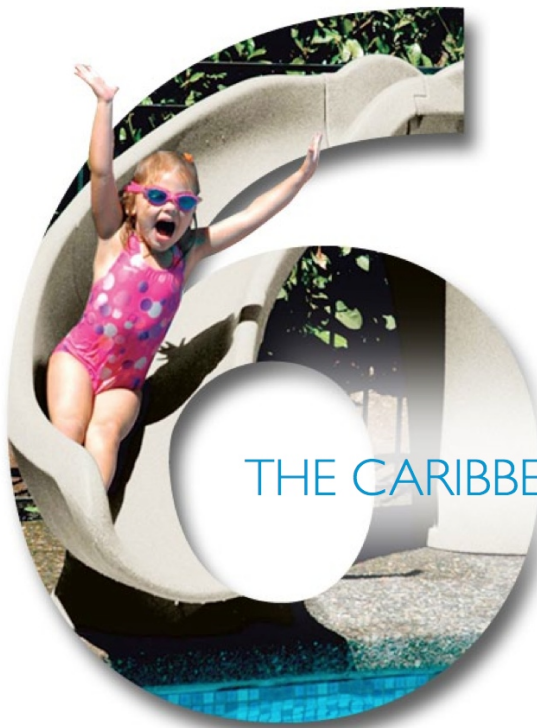
Not sure where to start? Let our designer bring to life the backyard oasis you've been dreaming of. See photo quality renderings of your Caribbean backyard before a shovel even hits the ground. We'll take you from concept to reality!





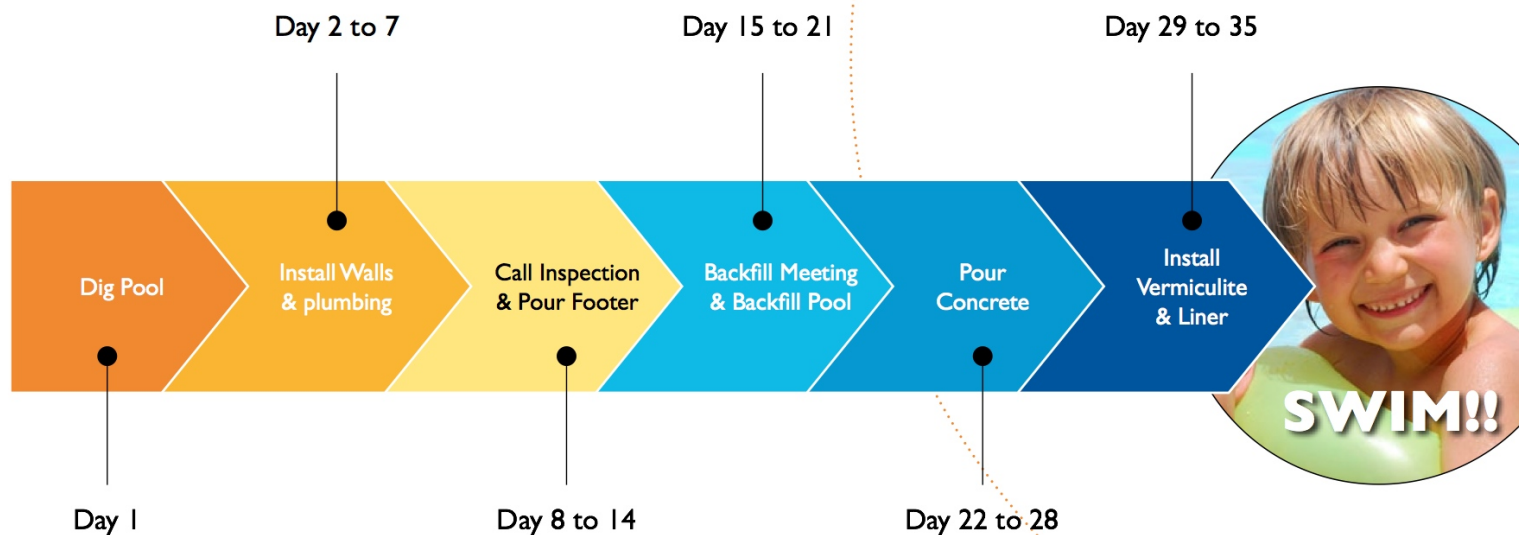
NOTE: A \$500 service fee required, timing based on designers availability





This timeline is meant as a rough guide to aid you in understanding the stages of the pool construction process. It is not meant to give you a specific timeline to the construction of your pool. Caribbean will not be in your backyard working every day on this schedule. There will be periods of time between days that you will NOT see progress on the pool. This is due to weather, the scheduling process and town inspections. In addition, the work of landscape and fence contractors can/shall alter the above calendar. In general, our goal is to have your pools liner installed within 5 weeks.

THE CARIBBEAN SIX STAGE CONSTRUCTION PROCESS



NOTE: In some towns and counties, the zoning ordinance requires that on NON Autocover Pools, your permanent fence must be installed before Caribbean can add water into the pool, this may delay the completion date of your new pool.



STEP 1

DIG POOL



STEP 2

INSTALL WALLS & PLUMBING



STEP 3

POUR FOOTER



STEP 4

BACKFILL MEETING & BACKFILL POOL



STEP 5

POUR CONCRETE



STEP 6

INSTALL VERMICULITE & LINER

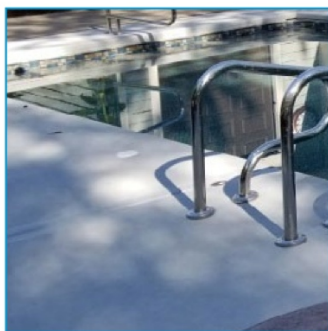
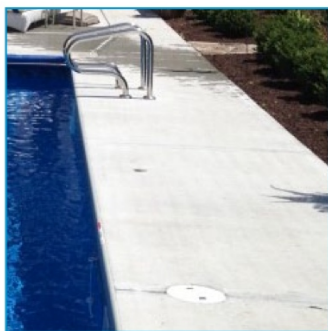




TYPES OF DECKING

STANDARD

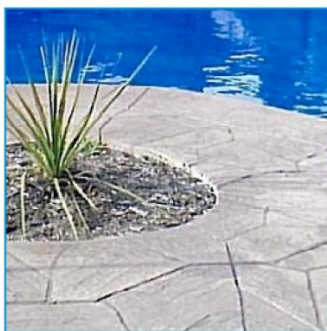
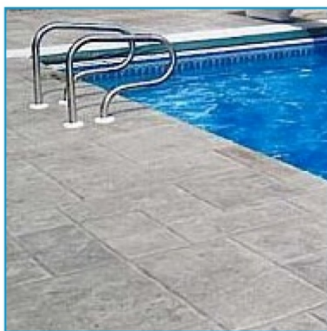
Standard flatwork grade concrete with brush strokes to add texture for safety, and trolled expansion joints to add style. Included in our Standard Pool Package.



STAMPED

(provided by others)

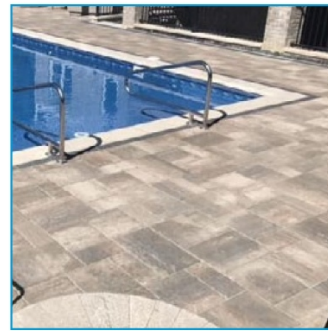
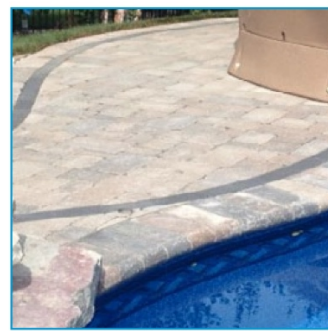
Stamped concrete, commonly referred to as patterned concrete, is concrete that is designed to resemble brick, slate, flagstone, stone, tile, or even wood.



PAVER BRICKS

(provided by others)

Brick pavers can give your pool that natural feel. Can be used side by side with concrete or installed on top of the pools concrete decking to give your pool the ultimate in natural feel. For those pool that require winter covers to be installed each fall, we do not recommend pavers up to your pools waters edge. The covers require grommets to be placed in to the pavers and will cause cracking.



TYPES OF COPING

A close-up photograph of a swimming pool's edge. A white, semi-circular coping is installed over the pool's concrete deck, creating a smooth transition between the pool wall and the deck. A white circular drain cover is visible on the deck.

Standard (White)

A white semi circle coping outlines the top of your pool walls where the concrete meets the waters edge. Included in our Standard Pool Package.

A close-up photograph of a swimming pool's edge. A gray, semi-circular coping is installed over the pool's concrete deck, creating a smooth transition between the pool wall and the deck. A white circular drain cover is visible on the deck.

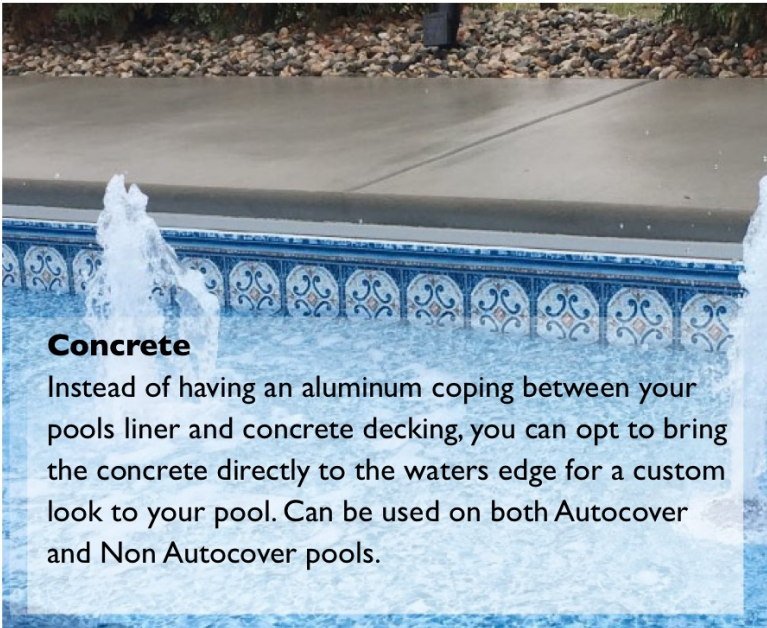
Autocover Standard (Gray)

Similar to our Standard coping, but comes with more of a flat face rather than a half circle. Manufactured in an attractive gray color to blend with the concrete better. Included in our Autocover Pool Package.

A close-up photograph of a swimming pool's edge. The pool's concrete deck is made of large, light-colored pavers. The coping is made of the same pavers, creating a seamless transition between the pool wall and the deck.

Pavers to Waters Edge

Contracted by and installed by landscape contractor.

A close-up photograph of a swimming pool's edge. The pool's concrete deck is made of large, light-colored pavers. The coping is made of the same pavers, creating a seamless transition between the pool wall and the deck.

Concrete

Instead of having an aluminum coping between your pool's liner and concrete decking, you can opt to bring the concrete directly to the waters edge for a custom look to your pool. Can be used on both Autocover and Non Autocover pools.



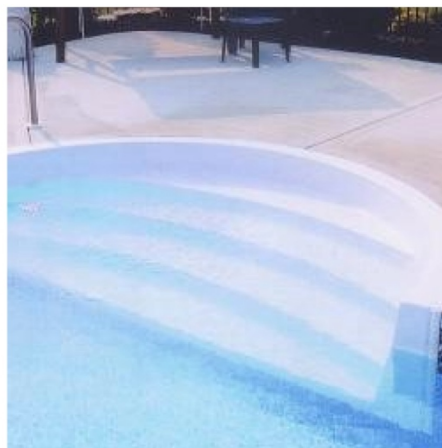


STEPS & LADDERS



THERMOPLASTIC SIT-N-STEP

An 8' x 4' thermoplastic step with two seats. A return line in each seat back gives the occupant water action on their lower back. 4 Treads and comes in straight or curved models to best suit your pool shape. Stainless steel rail included. White.



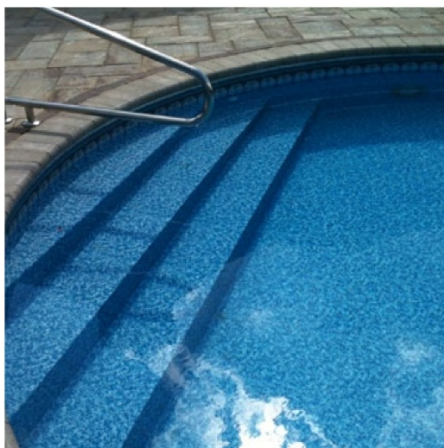
ROMAN

Contoured thermoplastic step available in 8' and 10' sizes. White.



THERMOPLASTIC CORNER

6' Thermoplastic step placed in the corner of your pool. Step has seat on either side of steps. Optional Return lines in seat back. Single handrail included. Included in our Autocover Pool Package (Can only be used on 90 degree or 6" radius corners. Pool shallow end size restrictions apply.)



LINER OVER STEEL FULL END STEPS

A liner over galvanized steel step that offers a grand entrance into your swimming pool. Includes two return lines and handrails. (Can only be used on rectangle end pool, or a pool with 8', 9', or 10' radius corners. Due to the nature of the product, 'wrinkles' may develop on step surface over time.)

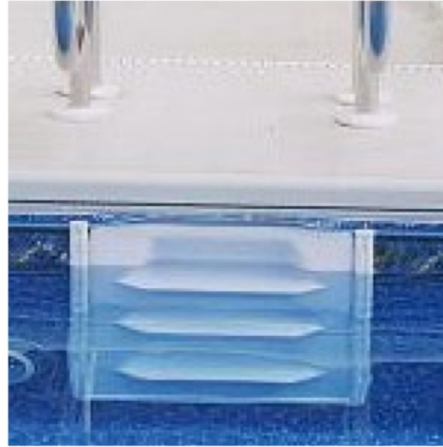


STEPS & LADDERS



3 TREAD LADDER

STANDARD 3-BEND in-pool ladder features 24-inch wide electro-polished stainless-steel construction with built in Sure-Step slip-resistant safety tread. Includes additional deck anchors and installation.



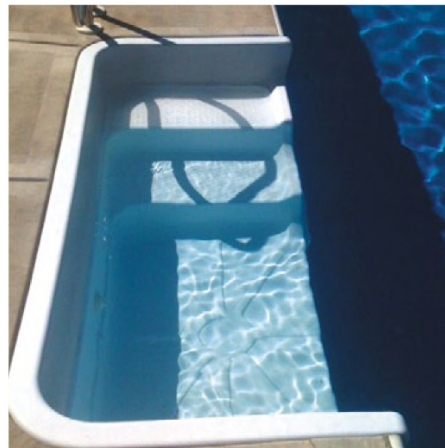
IN WALL LADDER

Three tread thermoplastic ladder built into the pool side wall. Two stainless steel rails provide easy entry/exit from pool. Comes in white only. Included with the purchase of an automatic safety cover.



CARIBBEAN CORNER BENCH

This creative bench is located in the deep end of your pool and doubles as a step. A great addition to your pool when used in place of the standard ladder.



CONTOUR STEP

Fiberglass swim out provides easy entry/exit in the deep end of your pool. Stainless steel rail included. Comes in white only.



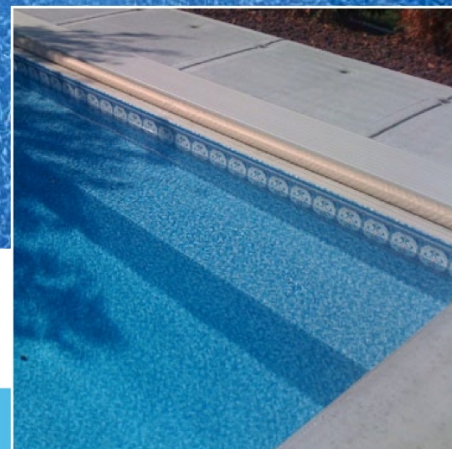
BUDDY SEAT

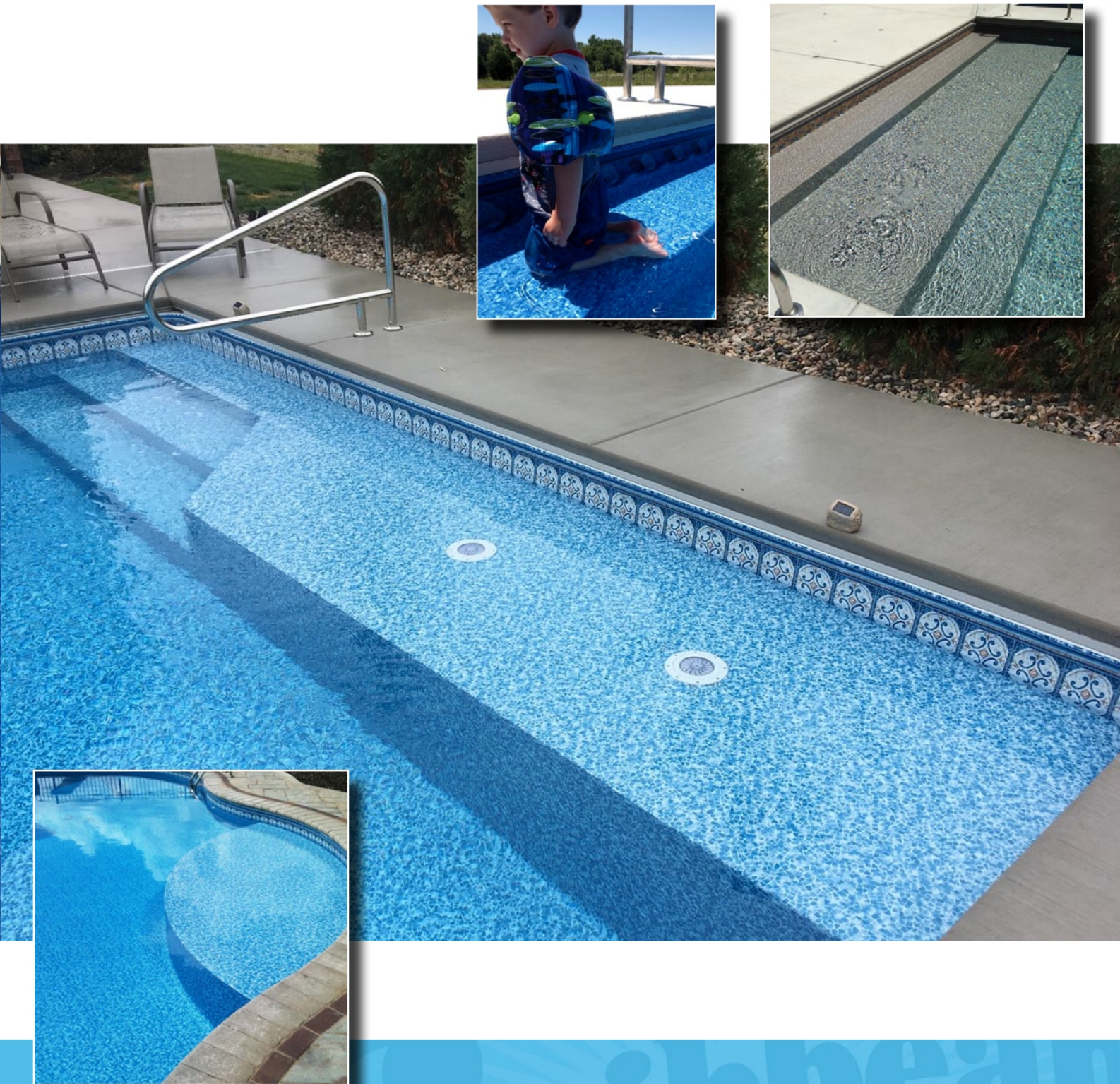
Got a buddy, grab a seat. This In-wall thermoplastic seat has a single water jet in the back of each seat. (Not shown in picture). Measure 6' in length. Comes in white only.





CUSTOM FEATURES







DESIGNER HANDRAILS



DESIGNER RAILS



DECK TOP MOUNTED RAILS



TRADITIONAL STAIR RAILS



There are more model lines and options available. Click the button below to see all of the railing products.

[See more rail options](#)





WINTER SAFETY COVER



Look to Rayner for Safety.

If safety is your main concern, the Rayner Safety Mesh or Mighty Mesh pool cover is the best choice for you!

Made from 100% polypropylene, our mesh is lightweight yet very strong ~ With a bursting strength of 350 pounds per square inch, this safety mesh pool cover is strong enough to support a cow!

Our Safety Mesh cover is absolutely maintenance free! Since the mesh allows water to drain through, there is no water to pump off the cover. And without the potential hazard of stand-ing or puddled water, you can simply put on your safety mesh cover and forget about it until spring.

Safety Mesh



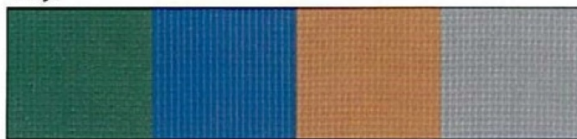
Green

Blue

Chocolate

Gray

Vinyl



Green

Blue

Chocolate

Gray





AUTOMATIC SAFETY COVERS

We make it strong. We make it easy.™
COVERSTAR



The automatic choice for safety, savings and convenience!

A backyard swimming pool is the ultimate source of family fun! But when it comes to children and pets, it is also the source of safety concerns. No parent can be watching over the pool every minute. No fence or alarm can prevent a child from getting access to an unsupervised pool. A Coverstar automatic safety pool cover can!

Strong protection – at the touch of a button!

Simply flip a switch, and your Coverstar automatic safety cover will create a barrier over your pool that no child or pet can penetrate. Custom-built to fit your pool perfectly and manufactured from best-in-class materials, Coverstar is the best protection available for your family and your pool investment!

Save on heat, water, electricity, and chemicals.

A Coverstar cover acts as a passive solar heater, increasing the temperature of your water by 8 to 10 degrees. It also reduces evaporation of water as well as consumption of chemicals.

Less time cleaning...more time enjoying!

A Coverstar cover keeps dirt and debris out of your pool. Time spent cleaning out dirt and leaves and putting in new chemicals is almost eliminated!





Mechanism engineered for unmatched reliability.

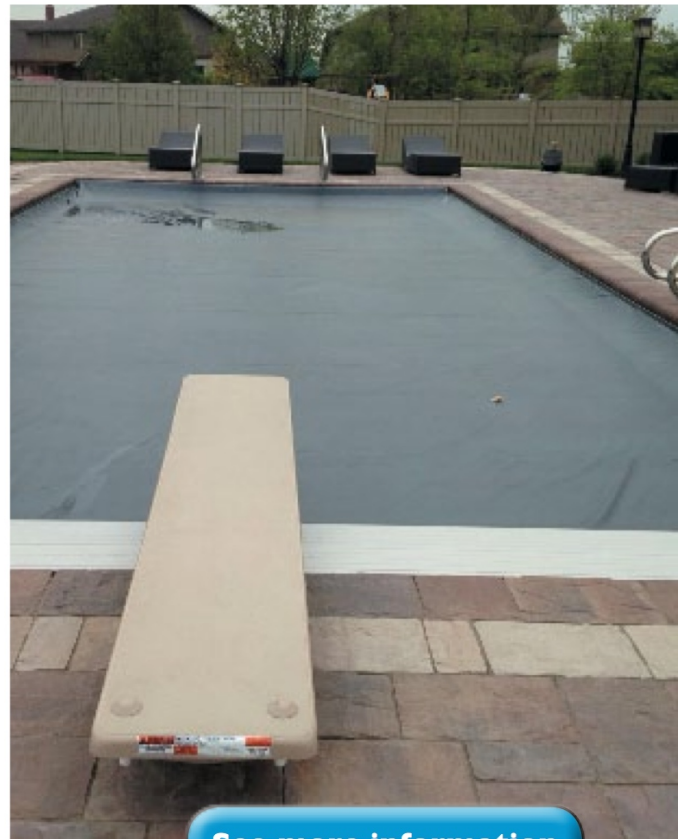
Our unique mechanism is engineered with heavy-duty components and with ropes and pulleys that are stronger than any others used in the industry. The extreme precision of the machined and laser cut parts allows for smooth operation and many years of hassle-free use.

Heat-sealed webbing for double the strength!

Most automatic cover manufacturers sew webbing material wrapped around rope to the cover. With this method, the webbing often fails before the fabric does. Coverstar uses an exclusive, patented process to heat seal webbing around a polymer bead and weld it to the cover in one step.



Independent lab tests show Coverstar's webbing is over twice as strong as competitive webbing sewn to a cover!



See more information





EQUIPMENT



EcoAdvantage items are those that which carry the industries best energy efficient ratings. Every one of these products can lay claim to saving energy, water, reducing noise, maintaining air quality, or delivering combinations of these environmental benefits.

Perhaps most compelling of all is when you link these 'best in class' choices into a single green system. Not only do you deliver individual products that are more environmentally responsible than other choices, there can be synergistic effects as well.



[See more information](#)





IntelliFlo VS



Standard pool pumps can consume as much energy as nearly all other home appliances combined — sometimes costing more than a \$1000 per year! IntelliFlo Variable speed pumps can cut energy use up to 90%!!

Revolutionary pool pump slashes energy costs up to 90%.

The quietest running pump on the planet.

Longer, Trouble-free service life—greater return on investment.

WhisperFlo 1 H.P. Pump

The Pentair Whisperflo pump is our Standard Package pump. The industry standard by every measure. Compare WhisperFlo® to any other high performance pump, and you'll hear the difference immediately. It's quiet and quiet means quality.



WhisperFlo



SuperFlo VS

See more information



RECOMMENDED
FILTER



PENTAIR

FNS[®] PLUS

FIBERGLASS D.E. FILTER



FNS[®] PLUS

THE FILTER THAT DELIVERS CRYSTAL CLARITY

Filtering with diatomaceous earth (D.E.) gives you water that really sparkles. That's because D.E. filters remove the tiniest of contaminants—particles as small as 5 microns (an average grain of sand is 1,000 microns). Even though these particles can't be seen individually, collectively they greatly affect water clarity.



[See more information](#)

NOTE: Cartridge and Sand filters are available upon request.





The MasterTemp heater's easy-to-read controls make system operation and monitoring simple. Pool and spa temperatures can be pre-set and controlled with the push of a button. A digital display indicates the water temperature, and five LED lights give you system status and let you know if the heater needs service.

Rotating digital display means more installation options and easier access to view operating information

Easy to install or retrofit in even the tightest space — models from 175M to 400M BTUs — all measure 21"L x 21"W x 28"H

Rustproof, tough composite exterior for long life

Available in natural gas and propane models



BEST-IN-CLASS ENERGY EFFICIENCY

- High efficiency rating makes these heaters extremely economical to operate. If your pool heater is more than 5 years old, chances are a MasterTemp heater could quickly pay for itself in utility bill savings.
- Optimized fuel/air mix provides superior efficiency and faster heat up.

CERTIFIED FOR LOW NO_x EMISSIONS

- In fact, our heaters outperform current industry standards for air pollution exhaust.

See more information





SANITIZING SYSTEMS

CARIBBEAN'S POOL & SPA MAINTENANCE PROGRAMS



A LITTLE OF THIS



A LITTLE OF THAT



A LOT OF THIS



iCHLOR

The iChlor Salt Chlorine Generator features smart technology that provides built-in intelligence for unmatched convenience and control. Just add salt to generate all the chlorine your pool needs. iChlor produces a steady stream of pure chlorine for softer, silkier pool water. It's the easiest and most effective way to maintain a sparkling clean pool.



KING TECH XL PRO

The XL Pro by King Technology utilizes the Pool Frog Mineral System and chlorine tablets for an easy and effect way to sanitize your pool while saving you time and money.

[See more information](#)



DELIAOP25

- LIGHTWEIGHT AND COMPACT DESIGN
- AOP POWER FOR SMALLER POOLS
- TREATS POOLS UP TO 25,000 GALLONS

PRODUCT DETAILS

- Patented APG Ozone Cells
- Germicidal UV-C Lamp
- 110/240 VAC Universal Voltage
- 20 GPM Max Flow Rate
- UL, cUL Certified
- CSA/NEMA 3 Metal Enclosure



AOP: THE MOST POWERFUL ADVANCED SANITIZER

THE ADVANTAGES OF AOP

With the use of AOP microorganisms are destroyed, chloramines are broken down and chlorine dependence is significantly reduced. Non-organic contaminants are also oxidized and water clarity is fully optimized to produce crystal clear results.

- Destroys 99.9% Of Harmful Contaminants
- Quickly Oxidizes Crypto, Giardia, & Other Chlorine Resistant Microorganisms
- Dramatically Reduces Chemical Demand & Increases Effectiveness Of Residual Sanitizers
- Eliminates Chemical Odors, Irritation and Damage To Pool Systems

THE SCIENCE OF AOP

When germicidal UV light (UV-C) and ozone react the result is the production of hydroxyl radicals. This reaction is known as Advanced Oxidation Process, or AOP. Hydroxyl radicals ($\cdot\text{OH}$) are the most powerful oxidation agents available, quickly destroying bacteria, viruses, pathogens and other contaminants that occur in water. Hydroxyl radicals also destroy chlorine resistant microorganisms, such as Cryptosporidium Parvum, Giardia and E.Coli.



OZONE IS GENERATED WITH
APG OZONE CELLS

UV-C LIGHT IS INTRODUCED TO
THE OZONATED WATER

OZONE AND UV-C REACT TO CREATE
POWERFUL HYDROXYL RADICALS





POOL AUTOMATION



WHO SAYS POOL AUTOMATION HAS TO BE COSTLY AND COMPLICATED?

Scheduling and controlling the operation of pool and spa equipment and related poolscape accessories is now blissfully automatic, simple and affordable. IntelliCenter Pool and Spa Control Systems eliminate the inconvenience of repeated trips to the equipment pad, memorizing operating sequences, opening and closing valves and resetting time clocks and thermostats.

THE ULTIMATE CONVENIENCE IN POOLSIDE CONTROL RIGHT AT YOUR FINGERTIPS



The ScreenLogic Interface Kit is included with IntelliCenter and you can control everything from pool and spa temperatures, to jets, lighting, water features and more—right from your favorite Apple device. The ScreenLogic interface gives you access to your pool and spa's operation from practically anywhere, anytime using your PC or Mac computer, iPad, iPhone or iPod touch mobile digital device. Whether you're across the deck or around the globe, pool control has never been this easy.

[See more information](#)

It's like putting pool or spa operation on cruise control.





Convenient control through a wireless remote



INTELLICENTER CONTROL SYSTEM FOR POOL AND SPA

The IntelliCenter Control System for Pool and Spa is the latest automation innovation from Pentair. Easily and intuitively manage the features of your pool and/or spa from anywhere in the world with IntelliCenter's remote access and built-in connectivity for the ultimate in convenient control.

- Enables mobile access and smart home control for added convenience
- New color touchscreen interface provides clear, intuitive display
- Optional indoor control panel and wireless remote
- Allows for remote temperature control so pool or spa is ready to use when you are
- Provides real-time email alerts
- Controls spa jets, lights and light shows, blower, water features, etc.
- Interfaces with iOS®, Android® mobile devices, Apple Watch® and Amazon Echo®, enabling owners to check their pools status remotely.



See more information

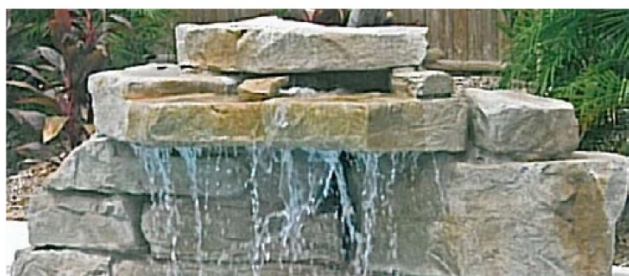


WATER FALLS



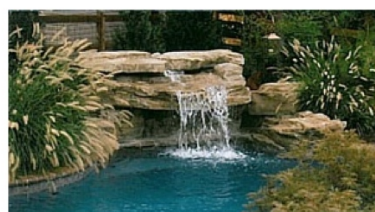
Veinte Cuatro

This 24 inch high waterfall works great for a small pool or spa, creating a little whitewater action and the pleasing sound of a mountain cascade.



Veinte Ocho

The spillways on this 28 inch high model create a softer sound and the clear sheet of water is refreshing. Shown here with the optional rock coping.



Repisa

The four piece ledger waterfall is very popular because water flows over irregular ridges and it looks great at both a low flow rate and with a lot of water flow. Shown here with optional rock tile at waterline.

These cast rock pieces are truly modular and have been installed in dozens of different applications including a “lift kit” (left) and on a raised bond beam (right).

Cascada Mediana

Six boulders make up this waterfall with a more dramatic sheet waterfall and a mini-grotto for the kids to play under. Another example is on the cover.

This unit measures 3' high and 7' across. Shown here with the optional rock coping that forms a handhold at waterline.





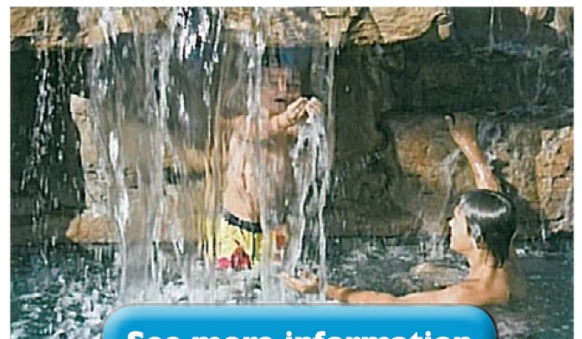
Cascada Doble

Bigger is better if you have a good sized pool. This double waterfall is 4 feet high, 12 feet wide and will provide years of poolside enjoyment, even if you never go swimming.



El Grotto

A grotto is a great place to hang out. The water falls three directions on this model to bring sparkle and a robust sound to any swimming pool. This waterfall is 5 feet high, and approximately 13 feet wide. Shown here with optional rock tile.



[See more information](#)





DECK JETS & LARIMARS



Deck Jets

A gentle sprinkling that provides optimum misting, an elegant stream that creates an arching water line, and a flute that provides an unique water spray. In addition to visual delight, the Deck Jet produces an aural backdrop of gentle, calming sound. The deck jet unit is recessed into your pools concrete apron and comes with three different spray nozzles. With the use of common hand tools and minimal mechanical knowledge you can switch from one nozzle to the next to alter your pools fountain features.



Laminars (set of two)

The laminar effect is a high-tech illusion. The water is so well controlled it creates a continuous stream of water that hits the pool water virtually sound-free and splash-free. Optional color-changing fiber optics produce a breathtaking evening light show. Comes with 2 flush mounted deck units. For optimum performance, water height will be between 3'-5' high.

Sold separately



The performance of all of the above water features can and will be affected by the amount of wind present during the water features operation. The statements above are made assuming no wind is present at the time of viewing. Caribbean Pools cannot be held responsible for poor water feature performance due to the presence of wind.

[See more information](#)



BUBBLERS



Bubbler

Imagine a backyard filled with soothing sound and brilliant color. Bubblers shoot streams up to thirty inches high in vivid LED colors. The cascading flume creates a natural sound and relaxing ambiance.





LED LIGHTING



5g pool light

5g spa light

IntelliBrite 5g Color-Changing Underwater LED Lights feature LED technology—the wave of the future in energy efficiency, lifetime value, quality of light and the ability to control it.



Blue



Green



Magenta



White



Red

Fixed color choices

With IntelliBrite 5g lights, combinations of individual colored LED lights are mixed and matched to achieve a vibrant spectrum of colors. These combinations are power sequenced to illuminate and cycle through colors at varying speeds, and in different sequences of color. With its custom reflector and innovative lens design, the IntelliBrite 5g light is the brightest and most efficient underwater LED light available.



Optional IntelliBrite controller

**Light intensity and light color may vary from pool to pool depending upon a number of factors including, but not limited to light location, plaster color, pool depth / geometry, overall lighting, etc.*

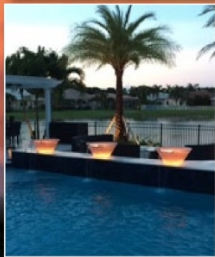
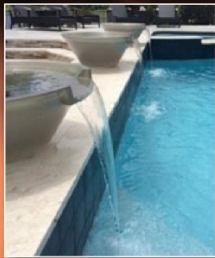
See more information



MAGIC BOWLS

NEW! MAGICBOWL™ WATER EFFECTS

THE ONLY WATER FOUNTAIN BOWL WITH
ELEGANT, LIGHTED FIRE EFFECTS



FireFX™ LED Lights are not included
and are sold separately.

During the day, a dazzling accent to your pool or spa. Available in a variety of colors to accentuate your pool's unique style.



Brass

Bronze

Copper

Gray

Natural

Pewter

White

See more information



SPORTS & EXERCISE



VOLLEYBALL

Includes an official size All-Terrain™ volleyball, 24' x 3' volleyball net, inflation pump and ball bag.



BASKETBALL

- 2 3/8" Stainless Post with Escutcheon Ring
- Vinyl Coated Stainless Steel Rim
- Color Matched Ball

In Ground Performance Series Pool Volleyball Set

- Telescoping, white-painted, aluminum poles
 - (2) 1 1/2" x 31" sections
 - (2) 1 3/8" x 33" sections
- 24' x 3' net with 1 1/2" top & bottom tape with 4" side tape
- Official size All-Terrain™ volleyball
- Inflation pump and needle
- All necessary hardware
- Canvas carrying/storage bag
- Fits a standard 1 1/2" deck sleeve
- Master pack of 3





THE TREADMILL FOR YOUR POOL



FAMILY FUN

Create your own exciting water park (lazy river effect, choppy water for boogie boarding)



EXERCISE & THERAPY

Provides a mild to vigorous workout with endless swimming or walking in place—with no stress on joints or bones



PERFECT FIT

Accommodates installation in limited space and varying pool designs



COST EFFICIENT

The Badu SwimJet offers many different packages in a wide price range to satisfy a variety of exercise styles and budgets

With a Badu SwimJet System from Speck Pumps, any pool can become an aquatic workout center. You'll burn calories, strengthen muscles and soothe body aches by swimming against a gentle or increasingly insistent current. You control the degree of workout you want — building body, mind and spirit.

[See more information](#)





RELAXING

In Pool Furniture & Umbrellas

DESTINATION SERIES™

BRING YOUR VACATION HOME™

- Perfect for residential or commercial use
- For use on a pool ledge with water depths up to 12"
- High-quality RTM composite material
- UV protection to resist fading
- Compatible with all pool types, including vinyl
- Exclusive colors and visual textures
- Patent pending fill system eliminates buoyancy
- Easy to drain and remove when not in use
- Made in the USA

COLOR & VISUAL TEXTURE OPTIONS

Pool owners with discerning taste will appreciate the subtle yet dramatic impact of color options that incorporate a visual texture.

STANDARD COLORS



PEBBLE
-55

CAPPUCCINO
-57

STARRY NIGHT
-60

SEASHELL
-61

FASHION GRAY
-56

TAN
-51

GRAY
-52

SPECIAL ORDER COLORS*



MONT BLANC
-54

AUTUMN SUN
-58

SAFARI SUNRISE
-59

SUMMIT GRAY
-53

*Special Order Colors may result in longer lead times. Contact Customer Service for more information.

SR Smith™





Easy to Move Destination Loungers



Seashell

Starry Night

NOTE: Special order item, lead times may vary based on manufacturer availability

[See more Information](#)

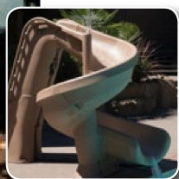




SLIDES

CYCLONE

4'1" tall at the handrails – low-profile fits almost anywhere! Enclosed ladder for maximum safety. Sturdy rotomolded construction for strength and durability. Available in right turn only. Colors: Sandstone, Gray Granite, and Taupe. **Weight Limit = 175 lbs.**



TYPHOON

7'- 4" tall at the top of the handrails. High-flow Grand Rapids water delivery system. Enclosed ladder and molded handrails for increased safety. We include a water supply line with a control valve at the equipment set and at the slide location to make operation easier.

Weight Limit = 275lbs



TURBO TWISTER

Over 7' tall at the top of the runway with a massive curve and thrilling dip for maximum sliding fun. Enclosed ladder and molded handrails for maximum safety. High-flow Grand Rapids water delivery system. We include a water supply line with a control valve at the equipment set and at the slide location to make operation easier.

Weight Limit = 275 lbs (User must be 48" or taller to use slide with adult supervision.)



[See more information](#)



DIVE BOARDS



La MESA BASE DURO BEAM BOARD

8' dive board. Available in: white. Includes additional concrete needed.
(Pool depths, slopes and size must conform to national dive standards)

[See more information](#)



La MESA BASE

DURO BEAM BOARD with Waterfall

The same great 8' dive board as above, but with a built in waterfall. Available in white. Includes additional concrete, waterline and control valve. (Pool depths, slopes and size must conform to national dive standards)



T-7 DIVING SYSTEM

- Unique 7' diving board
- Optional 10.25" Edgewater™ waterfall — runs on as little as 450 GPH (7.5 GPM)
- Manufactured with advanced composite materials
- Summit grey color blends well with natural environments

(Pool depths, slopes and size must conform to national dive standards)



[See more information](#)

COLOR UPGRADES: Customize your dive board to fit your taste with a variety of color options. (Colors not available on all models, additional fees apply)





HOT TUBS & SPAS

RELAX
IN YOUR VERY
OWN POOLSIDE SPA

Caribbean Pools not only offers great pool packages, we also carry a wide variety of hot tubs that are sure to ease that aching back. Choose from our extensive collection of free standing, self-contained inground, or spill-over style spas to complete your backyard oasis. For more hot tub info, visit www.caribbeanpools.com/products.html

Choose your spa from one of these industry leaders:





CANTABRIA

The spacious Cantabria®, our signature hot tub, redefines hydrotherapy. It comfortably fits eight adults and features the UltraMassage® lounge with the customizable UltraMasseuse® System. This jetting system will make you feel like royalty as you create your personal spa experience with six different jet sequences and three speeds.



Shown with Arctic White shell and Brownstone cabinet (above), Arctic White shell (below)

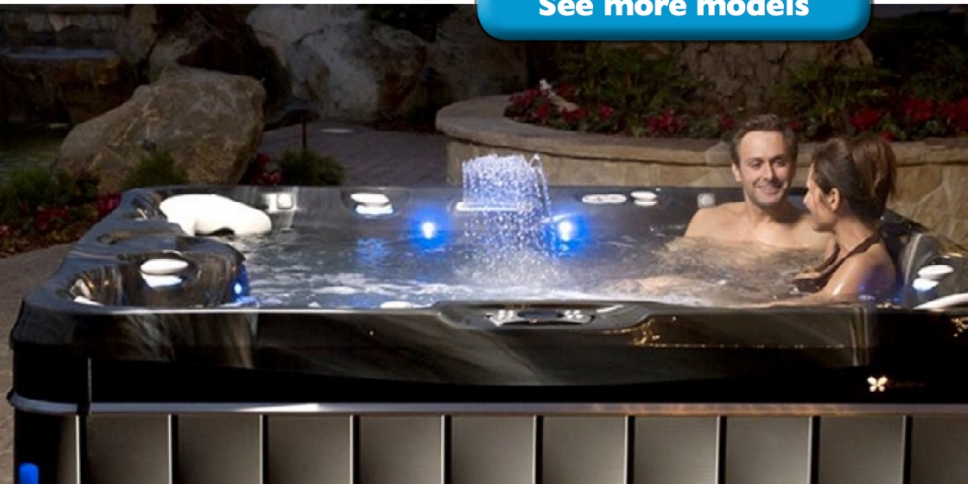
If you want to transform tension into rejuvenation every time you step into your hot tub, a Caldera Spa is the solution. Our goal has always been to create the best hot tubs – the most comfortable, energy-efficient and high-performance spas on the market. See our full line of spas to find your perfect fit.



Enhancements

- 2 Hip Jets in EcstaSeat®
- 2 Hip Jets in LumbarSage® Seat
- 14 Points of Interior Light

[See more models](#)





HOTTUBS & SPAS

L A Z B O Y®
HOT TUBS

Live life Comfortably.®

La-Z-Boy Hot Tubs Comfortable Seating and Design

COMFORTABLE SEATING

The Science of Sitting Underwater.

For almost 100 years, La Z Boy has built its reputation on comfortable seating. We've taken everything that we learned in the furniture industry and created one of the most comfortable hot tub product lines in the world.



[See more models](#)





AFFORDABLE LUXURY FOR YOUR LIFESTYLE

Exceptional hot water therapy
with quality you demand at a
price point you'll love.



Nordic Hot Tubs are offered in 5 distinct Series so you can quickly decide which features and options are best for you and your budget. Our quality remains the same from our Luxury Series through the All-In-1 10V Models. That's our commitment to you, that's the Nordic Difference!

- **Luxury Series**
- **Sport Edition**
- **Modern Series**
- **Classic Series**
- **All-in-1 10V Series**

[See more models](#)





ROUGH INS

Rough-ins are the opportunity for partial work to be completed during the initial construction with minimum impact to the surrounding area that allows you to add a slide, waterfall, or cups for basket ball/volley ball at a later date. (Just to name a few)

SLIDE

We will run up to 100' of a 1 1/2" poly water line from your equipment set to a future slide location. Includes valve and plumbing.

WATERFALL

We will run up to 100' of a 2" flex PVC water line from your equipment set to a future waterfall location. Includes valve and plumbing.

ELECTRICAL OUTLETS

GFI protected electrical outlet installed within the pool deck area.

GRI DOOR ALARM

Door safety alarm that monitors entry to pool and spa areas. Remote sounders and shunt options. Built-in back-up battery capable. Low battery alert. A requirement in Homer Glen and Frankfort IL, installation extra.

ACTUATORS

Control water features with these actuators. Designed for use with 2-port and 3-port valves. Features maximum torque, 24VAC bi-directional motor. Requires additional room on circuit board.



GAZEBOS & PERGOLAS

Summerbrook
Outdoors



The DSP1

Traditional flat-topped pergola provides structure and shade while maintaining an open-air feel of the outdoors. Constructed with 100% Western Red Cedar which ages beautifully and is naturally resistant to rot, decay and insect damage. The cedar we use is beautiful, versatile and sustainable.



The DSP2

The Tuscan pergola, defines your outdoor area leaving plenty of room for dining tables & chairs, conversation seating groups, and outdoor kitchens. Can either be the main focal point or set to one side for an intimate gathering area.



The DSP3

The pavilion pergola with a metal roof option provides protection from the elements and a large shade island. The gentle slope of the roof-line is angled at a 4/12 pitch with an overall height of 10'-12' at the peak depending on the size of the pergola.

[See more information](#)



OUTDOOR FIREPLACES

Summerbrook
Outdoors



The DFPG

Our coziest wood burning outdoor fireplace.



*shown with
wood boxes*

The DFP1

A compact wood burning outdoor fireplace with a 30" fire box that can fit into almost any design.



*shown with
wood boxes*

The DFP2

A mid-size wood burning outdoor fireplace with a 36" fire box and an attractive stepped chimney detail.



*shown with
wood boxes*

The DFP3

Our largest wood burning outdoor fireplace with a 36" fire box and flowing proportional lines.

All of our outdoor fireplaces are solidly-built using a FireRock™ masonry core, high temperature fire brick lining and cultured stone veneer. Gas log starters or gas log sets can be added as an upgrade.

[See more information](#)



OUTDOOR KITCHENS

Summerbrook
Outdoors



The DSI

The compact footprint of the DSI outdoor kitchen fits easily on smaller decks and patios.

The DS2

The DS2 outdoor kitchen island fits into smaller spaces while providing seating for 2-3 people.

The DS3

With an 83" dining ledge, the DS3 outdoor kitchen island can replace a dining set and offer guests a perch to interact with the cook.

The DS4

The DS4 is an all-in-one outdoor kitchen island and fire table. This island packs a powerful entertaining punch as both an outdoor kitchen and fire table all-in-one.

The DS5

The DS5 is a large, L-shaped, outdoor kitchen island with counter seating for up to 7 people. Component side is big enough to accommodate additional drawers, doors and other components.

See more information





Big Green Egg[®]

The Ultimate Cooking Experience[®]



HEATED AIR EXITS

Patented, multi-variable Dual-Function Metal Top controls air flowing through the cooking chamber

Air-tight ceramic cooking chamber retains heat and keeps food moist

Sealed Fire Box uses efficient 100% Natural Lump Charcoal

Patented, Precision Flow Draft Door controls the amount of air entering the fire box

FRESH AIR ENTERS



©COPYRIGHT BIG GREEN EGG INC.

Precise Temperature Control

Grill, smoke and bake on your EGG at exact temperatures by easily adjusting the patented air flow systems. You have total control over temperature at your fingertips, maintaining accuracy within a few degrees! The Made in USA temperature gauge provides precise readings to 750°F/ 400°C. Many indoor ovens cannot match the accuracy of the EGG's temperature control!



[See more information](#)



CARING FOR YOUR POOL



Our on-site technician will show you how to care for & operate your swimming pool.

MAINTENANCE PACKAGES

Each pool's personality varies. We have a maintenance plan to fit each type. Contact us for a quote.
800-589-POOL or maintenance@caribbeanpools.com.

2x Week Full Service Maintenance: This one is for the well enjoyed pool, when you just want to float!

2x Week Maintenance Assist / Single Vacuum: This one is for the occasionally used & auto cover pool.

2x Week Chemical Maintenance Assist: This one is for the almost do-it-yourselfer.

One Time / Vacation Maintenance: This one requires payment for the visit of \$150.00 at the time of scheduling.

[See more information](#)





AUTOMATIC POOL CLEANER

KREEPY KRAULY®
BY PENTAIR



PROWLER® 920 ROBOTIC INGROUND POOL CLEANER



All-Surface Deep Cleaning
Powerful, High-Speed
Scrubbing Brush



**Fast and Easy
Debris Removal**
Top-Access Filtration Basket



**Select from Large or Fine
Debris Filtration Cartridges**
Dual Filtration Options



**Programmable Daily
Cleaning Schedules**
Built-In Weekly Timer

The Prowler 920 Robotic Inground Pool Cleaner offers a superior level of cleaning for inground pools. Your pool's walls and floor get deep-scrubbing and powerful vacuuming action, all the way up to the waterline. Just plug it in and watch it work. Prowler 920 will get your pool sparkling clean and ready to enjoy in practically no time.

Advanced scanning software ensures floor and walls are fully covered using the most efficient route. The Prowler automatically navigates around obstacles and quickly returns to its cleaning pattern.

The Prowler 920 gives your pool powerful cleaning with the unmatched convenience and efficiency of robotic cleaners. It's built to minimize effort, so you can spend more time enjoying your pool with family and fiends.



[See more information](#)



IN-STORE INSTRUCTIONAL



**We offer free in-store
water testing**



Over the past 25 years, BioGuard pioneered and continually refined the science of water analysis with their exclusive, cutting-edge water-testing tools ALEX® and BioGuard Smart Lab™. ALEX is revolutionary software that analyzes test results, figures proper treatment and yields product suggestions and instructions. Smart Lab is the actual unit, a photometer that reads the water reagent disks. Visit our retail store for a water test and to receive personalized instructions for maintaining your pool or spa.





FINANCIAL OPTIONS

Need help with financing your backyard oasis? We work with very reputable institutions that will be glad to help.



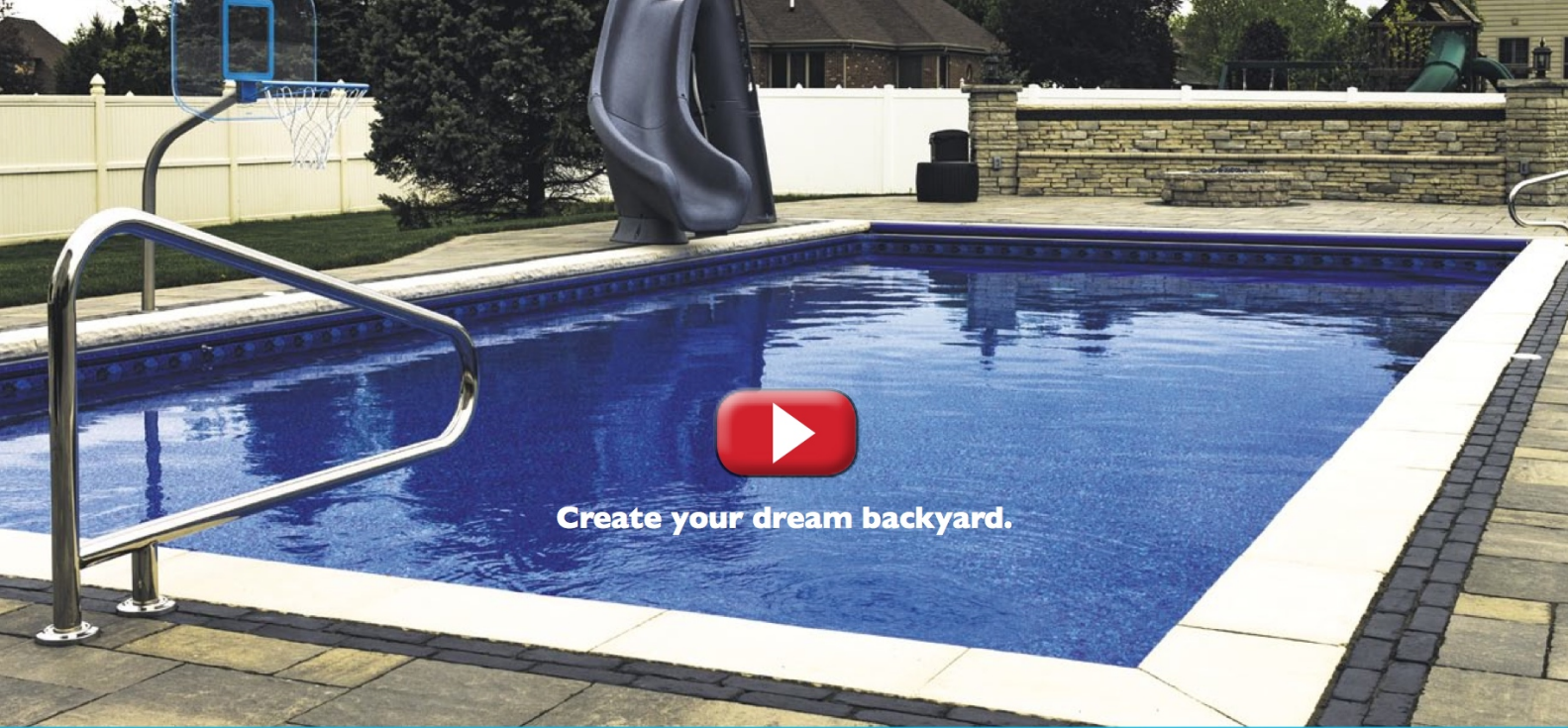
[See more information](#)



[See more information](#)







Create your dream backyard.



Schererville

Caribbean Pools & Spas
36 E US Hwy 30
Schererville, IN 46375
Phone: (219) 322-8550



Orland Park

Caribbean Pools & Spas
11020 W 179th Street
Orland Park, IL 60467
Phone: (708) 479-5900



Valparaiso

Caribbean Pools & Spas
3900 Murvihill Road
Valparaiso, IN 46383
Phone: (219) 299-2997



www.caribbeanpools.com
800-589-POOL
OR text us at 219-322-8550

