



Family fun in the sun, since 1976.



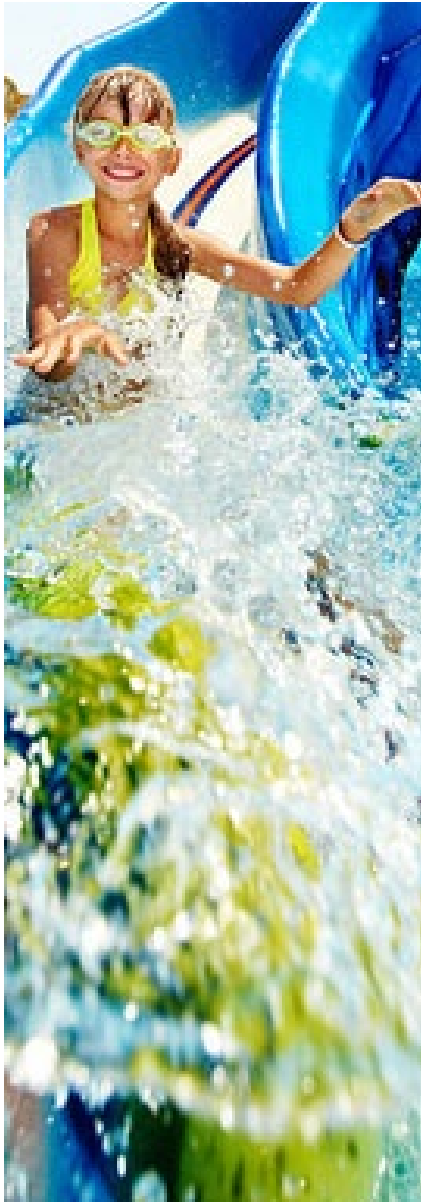
OPTIONS CATALOG

— *for* —

POOLS AND SPAS



DEAR FUTURE CUSTOMER



At Caribbean Pools, Inc., we offer in-ground swimming pools adaptable to any backyard landscape. Choose from traditional shapes or freeform designs, and let us help you create the oasis you’ve been dreaming of.

If you’re looking to enhance your poolscape, check out our extensive selection of special options, ranging from unique water features to the perfect lighting for any pool or spa. Along with our extensive selection of the ultimate in-pool and spa products, you’ll find an experienced and motivated Customer Service staff always happy to help.

We know individuality is important, which is why we pay special attention to the interests of each customer throughout the entire design and development process. From the minute you walk through our door, we’ll have your best interests in mind. Founded not only on excellent customer service, but also on the principles of hard work and a focused attitude, Caribbean Pools, Inc. has a long list of satisfied customers.

Please use this options catalog to aid you in designing your backyard oasis. Should you have any questions along the way, feel free to call one of our staff members or your salesperson.

Thank you for considering us to install your new inground pool!

Sincerely,
The Caribbean Pools Family



TABLE OF CONTENTS

Types of Pools We Install	4
Backyard Design Services	8
Construction Process	10
Decking Options	12
Coping Options	13
Entrance, Exit, & Entertaining	14
Handrails	18
Cover Options	19
Equipment	22
Automation	28
Water / Fire / Lighting Features	30
Sports / Exercise	36
Slides	38
Diveboards	41
Hot Tubs & Spas	42
Planning Ahead (rough ins)	46
Gazebos / Pergolas	47
Outdoor Fireplaces	48
Outdoor Kitchens	49
Big Green Egg	50
Caring for Your Pool	51
Finance Options	54

** Click on the page number to go directly to the page.*





FIBERGLASS POOLS



Natural



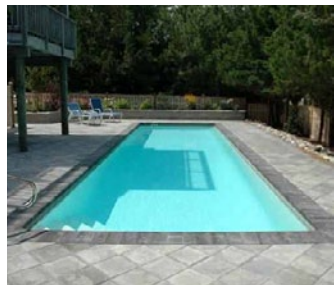
Rectangle



Kidney



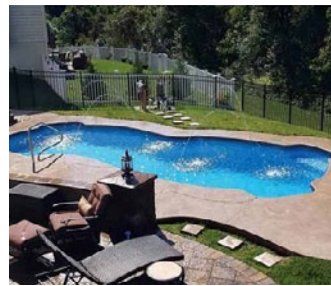
Spas



Lap Pools



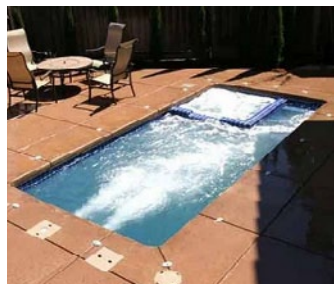
Classic



FreeForm



Tanning Ledges



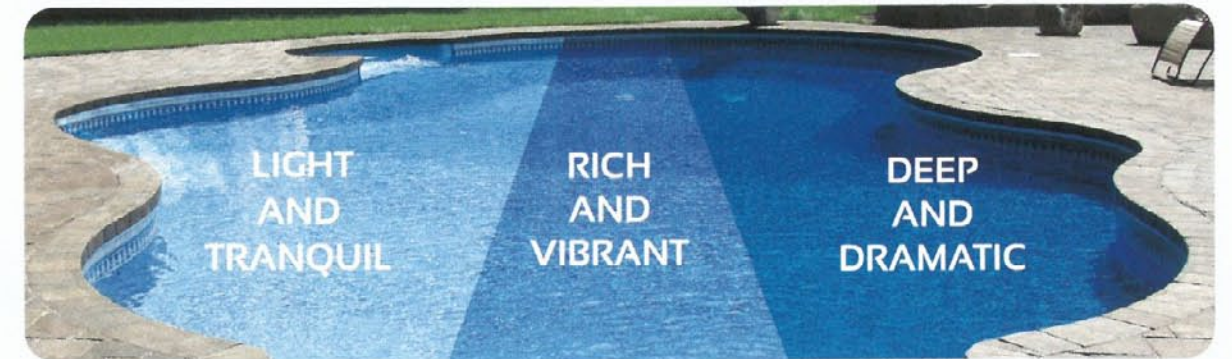
Swim Spas



Choosing a Latham Grand dealer is more than creating a place for swimming and fun. It is a solid investment in your property and its value, and a delightful long-term addition to your lifestyle. Your decision to purchase a pool means many years of family enjoyment including healthy exercise in a state-of-the-art product that combines long-lasting durability with aesthetically pleasing design.

VINYL POOL LINERS

Vinyl is a luxurious pool surface. It's soft, smooth texture alleviates the rough effects of other surfaces and allows you to create a designer look for your backyard escape. Visit Lathampool.com or craftworkspool.com to view designs in a simulated pool.



LIGHT SERIES

Subtle and soothing tones hinting at the light blues of the Caribbean Islands. Select patterns from the lighter side of things.

RICH SERIES

Vibrant colors inspired by luxurious oceanfront lifestyles. A collection of patterns for seaside elegance at home.

DEEP SERIES

Bold and dramatic dark blues with striking patterns, similar to the serene beauty of a lake side retreat. Select patterns of sophistication.

Once you've narrowed down your pattern selections, consider if you would like to coordinate matching stairs and benches with our PosiTrac™ line, which thickness of vinyl is best for you.

27

PREMIUM

A 27 mil wall and floor is our most heavy-duty liner configuration. A popular choice in climates with freeze and thaw cycles – or if you want the peace of mind to know that you've selected the best protection against the elements.

27
20

PERMAWALL™

PermaWall is the combination of a 27 mil wall with a 20mil floor. This creative combo puts the strength of 27 mil where you need it most, providing both performance and affordability.

20

CLASSIC

Our classic all 20 mil liners are precision crafted from the same premium vinyl that is used throughout our high performance products. This lighter weight, highly durable product is an excellent choice while still meeting budget restrictions.

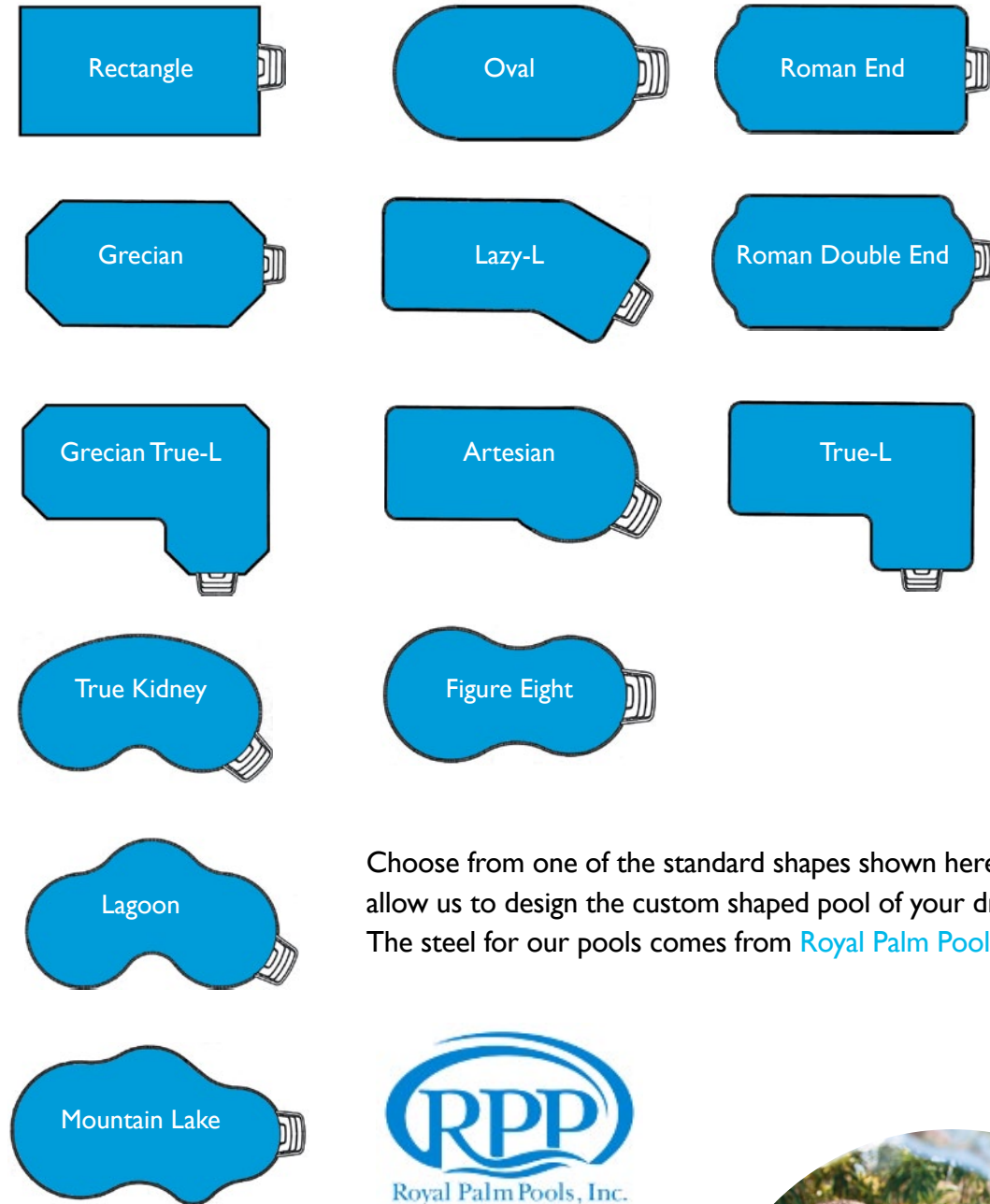
POSI

POSI-TRAC™

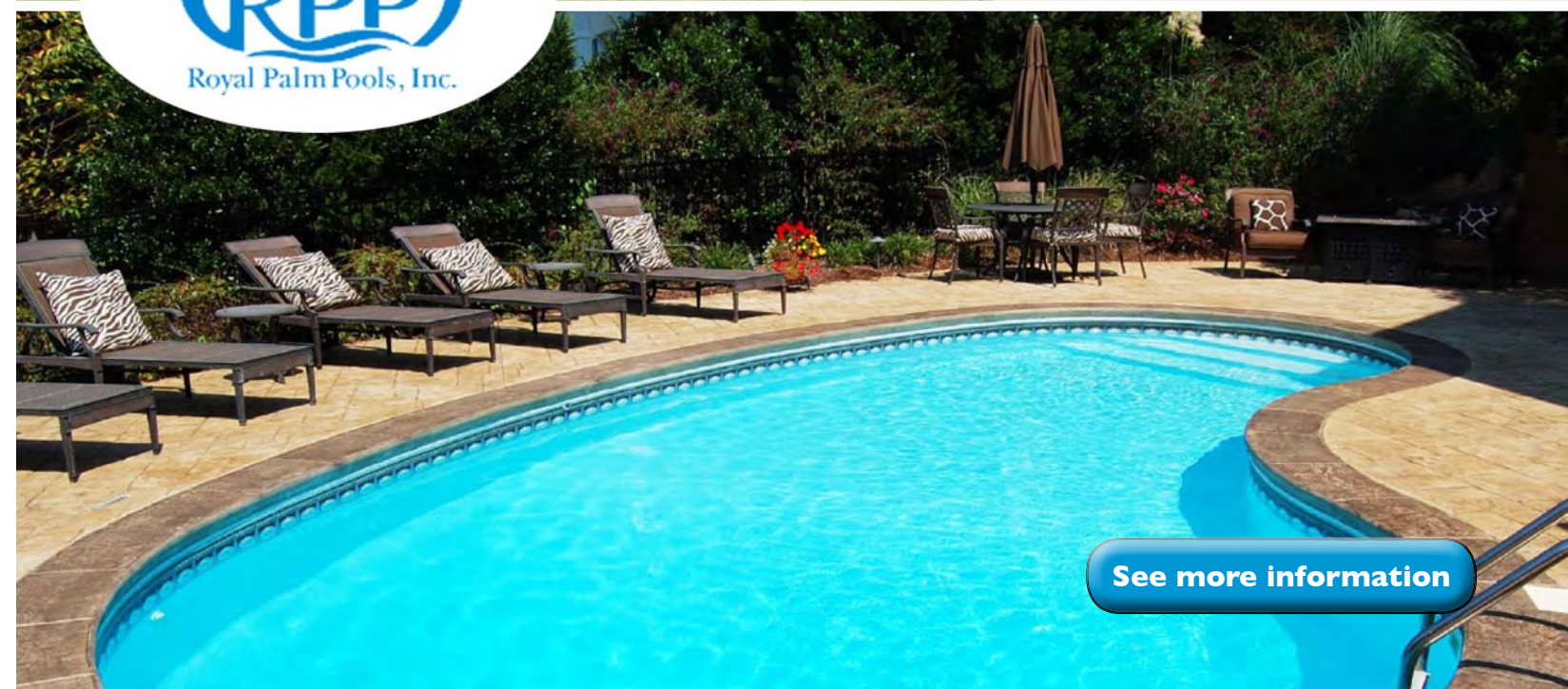
Our Posi-Trac materials are textured vinyl that provide additional traction to high traffic areas such as stairs, benches or sun ledges. Available in a variety of solid colors and printed patterns to match or compliment your personalized pool interior.



MOST POPULAR OPTIONS IN VINYL POOL SHAPES



Choose from one of the standard shapes shown here or allow us to design the custom shaped pool of your dreams. The steel for our pools comes from [Royal Palm Pools](#).



[See more information](#)

BACKYARD DESIGN SERVICES

Not sure where to start? Let our designer bring to life the backyard oasis you've been dreaming of. See photo quality renderings and vivid walkthrough videos of your Caribbean backyard before a shovel even hits the ground. **We'll take you from concept to reality!**

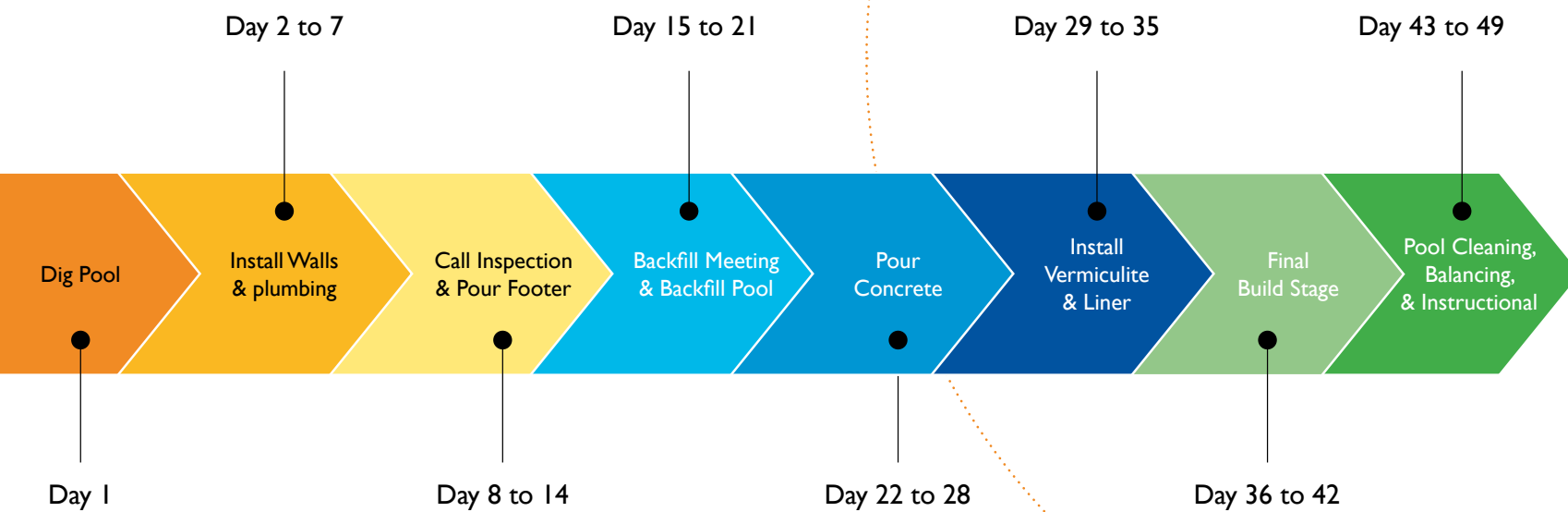


NOTE: A service fee required, timing based on designers availability



This timeline is meant as a rough guide to aid you in understanding the stages of the pool construction process. It is not meant to give you a specific timeline to the construction of your pool. Caribbean will not be in your backyard working every day on this schedule. There will be periods of time between days that you will NOT see progress on the pool. This is due to weather, the scheduling process and town inspections. In addition, the work of landscape and fence contractors can/shall alter the above calendar. In general, our goal is to have your pools liner installed within 6 to 8 weeks.

THE CARIBBEAN EIGHT STAGE CONSTRUCTION PROCESS



NOTE: In some towns and counties, the zoning ordinance requires that on NON Autocover Pools, your permanent fence must be installed before Caribbean can add water into the pool, this may delay the completion date of your new pool. Allow extra production time for sun ledge and free form pools. Weather can greatly affect build time.

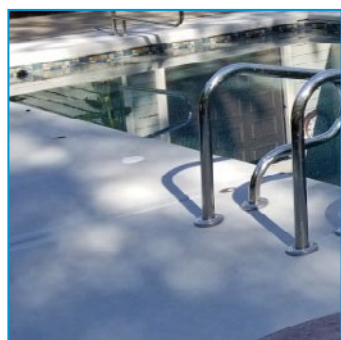
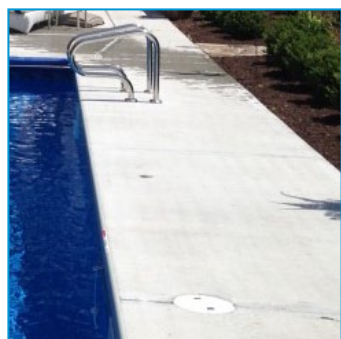
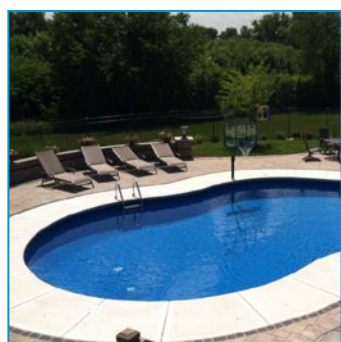
- STEP 1** DIG POOL
- STEP 2** INSTALL WALLS & PLUMBING
- STEP 3** POUR FOOTER
- STEP 4** BACKFILL MEETING & BACKFILL POOL
- STEP 5** POUR CONCRETE
- STEP 6** INSTALL VERMICULITE & LINER
- STEP 7** FINAL BUILD STAGES
- STEP 8** POOL CLEANING, BALANCING, AND INSTRUCTIONAL



TYPES OF DECKING

STANDARD

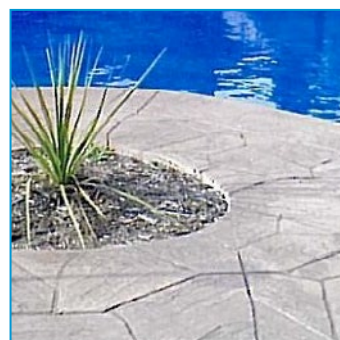
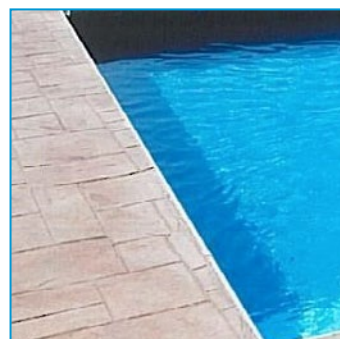
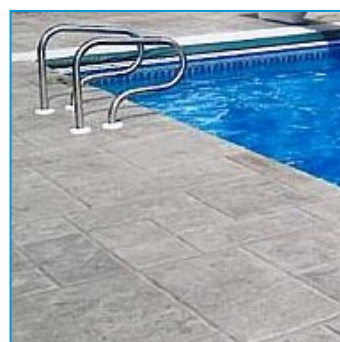
Standard flatwork grade concrete with brush strokes to add texture for safety, and troweled expansion joints to add style. Included in our Standard Pool Package.



STAMPED

(provided by others)

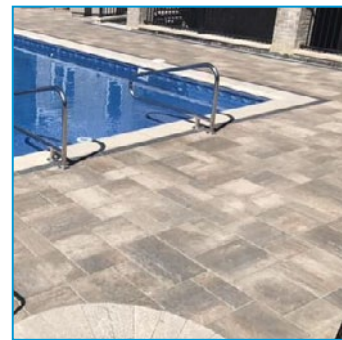
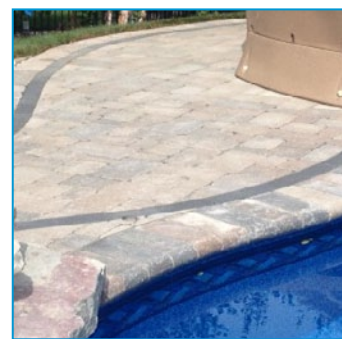
Stamped concrete, commonly referred to as patterned concrete, is concrete that is designed to resemble brick, slate, flagstone, stone, tile, or even wood.



PAVER BRICKS

(provided by others)

Brick pavers can give your pool that natural feel. Can be used side by side with concrete or installed on top of the pools concrete decking to give your pool the ultimate in natural feel. For those pool that require winter covers to be installed each fall, we do not recommend pavers up to your pools waters edge. The covers require grommets to be placed in to the pavers and will cause cracking.



TYPES OF COPING

Standard (White)

A white semi circle coping outlines the top of your pool walls where the concrete meets the waters edge. Included in our Standard Pool Package.



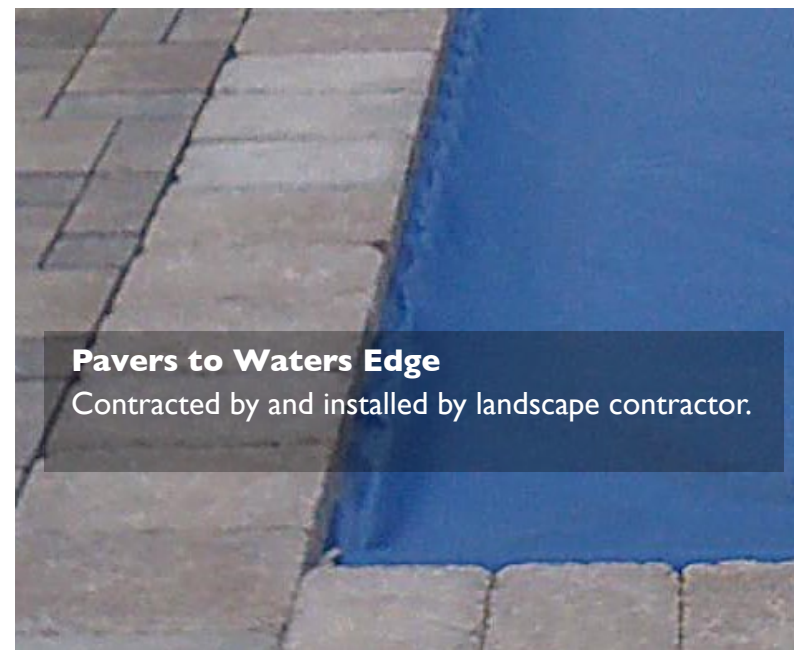
Autocover Standard (Gray)

Similar to our Standard coping, but comes with more of a flat face rather than a half circle. Manufactured in an attractive gray color to blend with the concrete better. Included in our Autocover Pool Package.



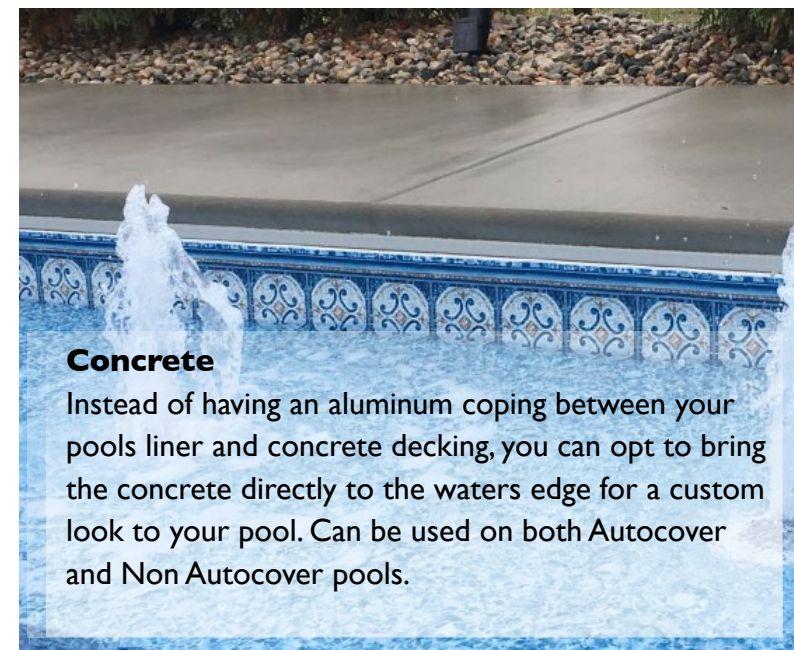
Pavers to Waters Edge

Contracted by and installed by landscape contractor.



Concrete

Instead of having an aluminum coping between your pools liner and concrete decking, you can opt to bring the concrete directly to the waters edge for a custom look to your pool. Can be used on both Autocover and Non Autocover pools.



*Please consult your salesperson and/or project manager if you are planning to do pavers to waters edge.

*Please consult your salesperson and/or project manager if you are planning to do pavers to waters edge.

STEPS & LADDERS



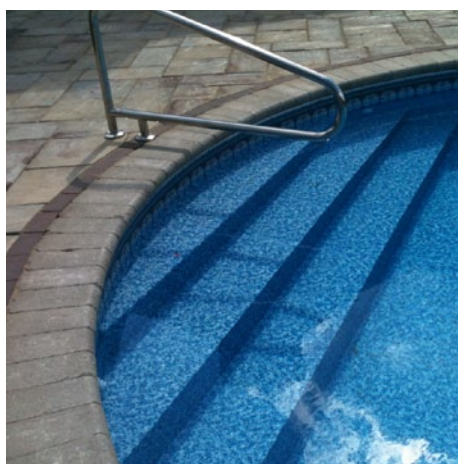
THERMOPLASTIC SIT-N-STEP

An 8' x 4' thermoplastic step with two seats. A return line in each seat back gives the occupant water action on their lower back. 4 Treads and comes in straight or curved models to best suit your pool shape. Stainless steel rail included. White.



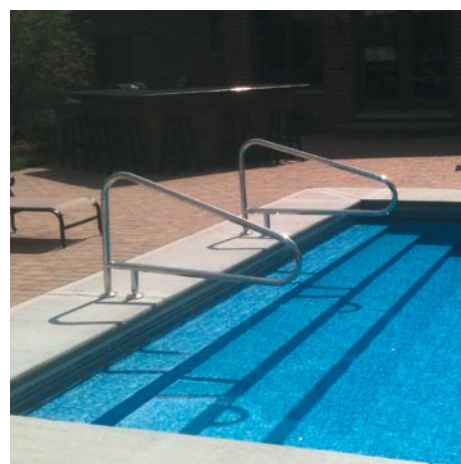
THERMOPLASTIC CORNER

6' Thermoplastic step placed in the corner of your pool. Step has seat on either side of steps. Optional Return lines in seat back. Single handrail included. Included in our Autocover Pool Package (Can only be used on 90 degree or 6" radius corners. Pool shallow end size restrictions apply.)



LINER OVER STEEL FULL END STEPS

A liner over galvanized steel step that offers a grand entrance into your swimming pool. Includes two return lines and handrails. (Can only be used on rectangle end pool, or a pool with 8', 9', or 10' radius corners. Due to the nature of the product, 'wrinkles' may develop on step surface over time.)

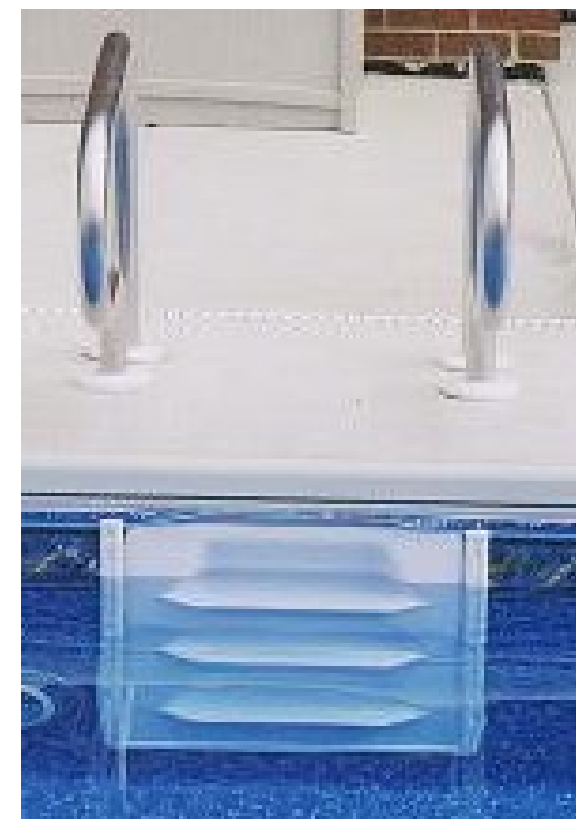


STEPS & LADDERS



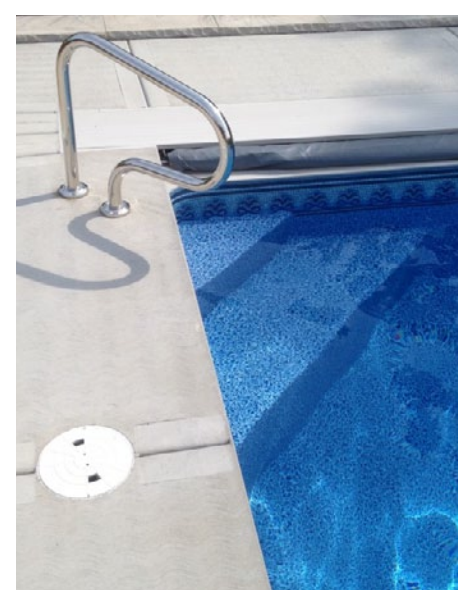
3 TREAD LADDER

STANDARD 3-BEND in-pool ladder features 24-inch wide electro-polished stainless-steel construction with built in Sure-Step slip-resistant safety tread. Includes additional deck anchors and installation.



IN WALL LADDER

Three tread thermoplastic ladder built into the pool side wall. Two stainless steel rails provide easy entry/exit from pool. Comes in white only. Included with the purchase of an automatic safety cover.



CARIBBEAN CORNER BENCH

This creative bench is located in the deep end of your pool and doubles as a step. A great addition to your pool when used in place of the standard ladder.

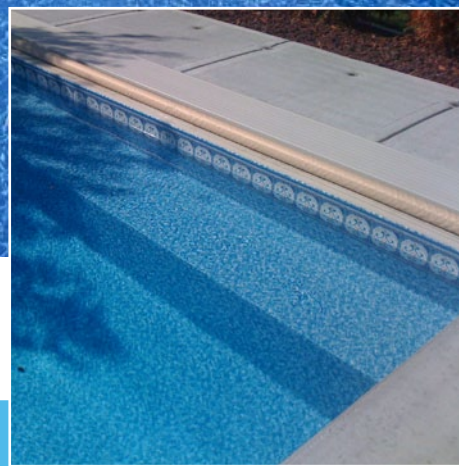
CUSTOM FEATURES



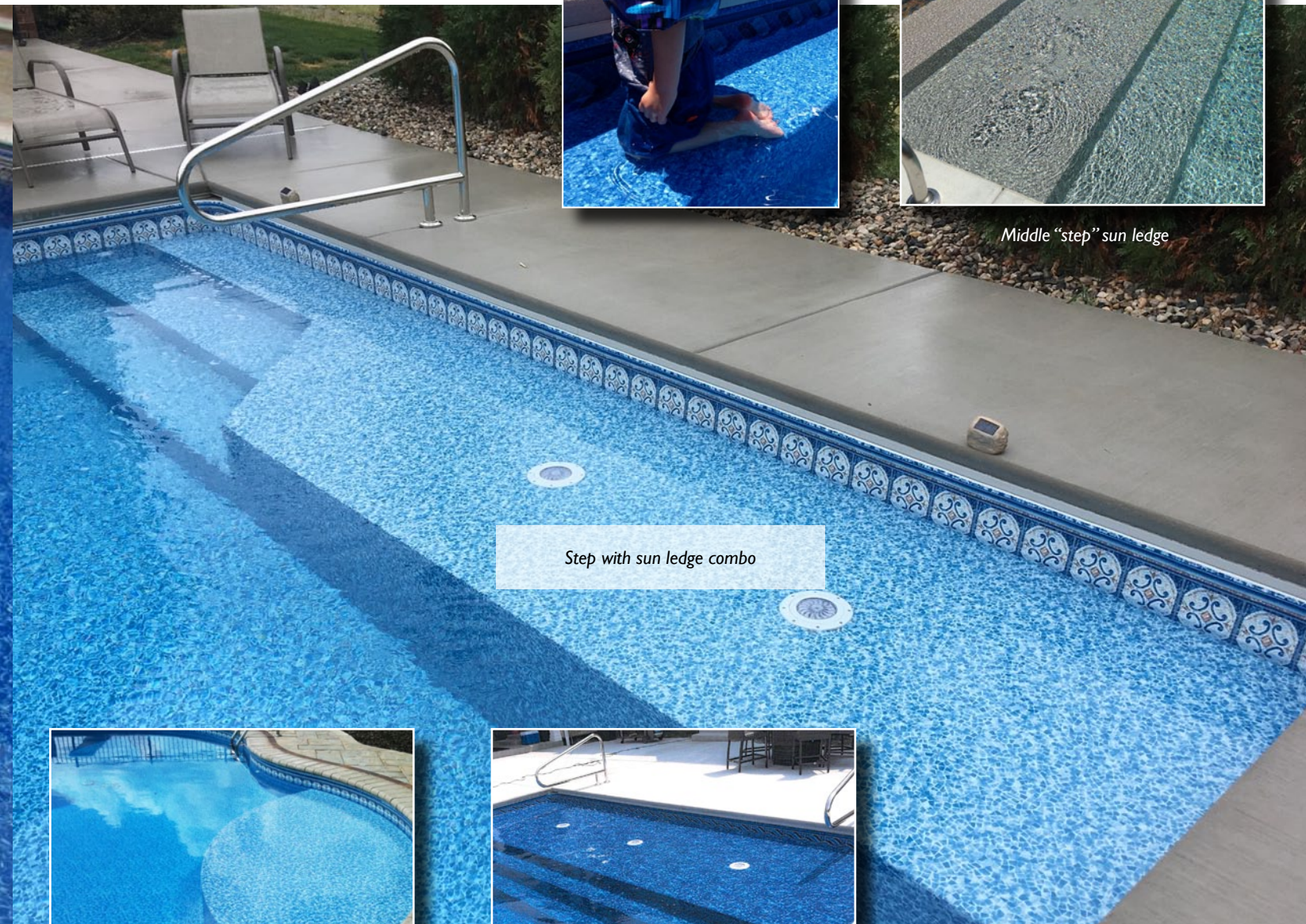
Double corner step with full bench combo



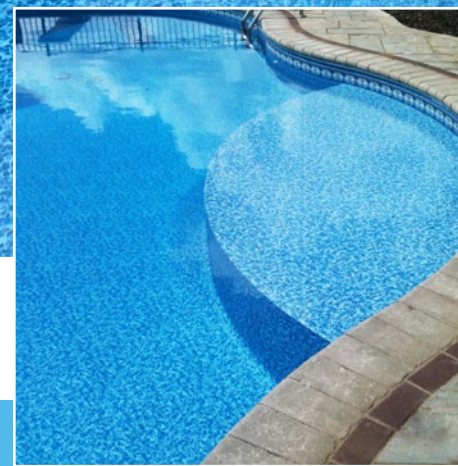
Custom sun ledge with full end steps



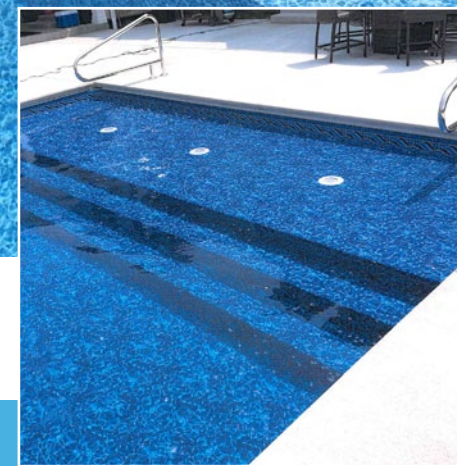
Full end bench



Step with sun ledge combo



Free form sun ledge



Sun ledge with full end steps



Middle "step" sun ledge



HANDRAILS



NOTE: All handrails are deck mounted.

DECK TOP MOUNTED RAILS



TRADITIONAL STAIR RAILS

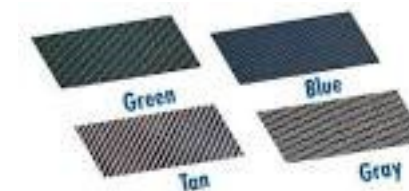
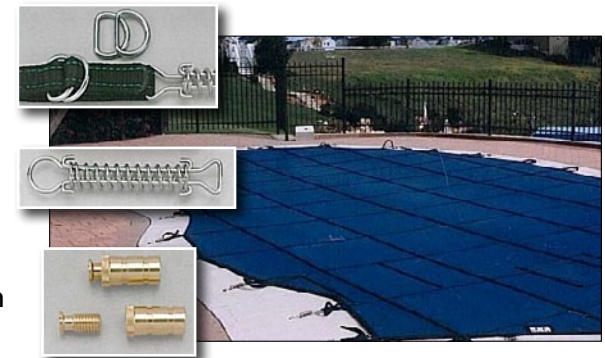


WINTER SAFETY COVER

If safety is your main concern, the Rayner Safety Mesh or Mighty Mesh pool cover is the best choice for you!

Made from 100% polypropylene, our mesh is lightweight yet very strong ~ With a bursting strength of 350 pounds per square inch, this safety mesh pool cover is strong enough to support a cow!

Our Safety Mesh cover is absolutely maintenance free! Since the mesh allows water to drain through, there is no water to pump off the cover. And without the potential hazard of standing or puddled water, you can simply put on your safety mesh cover and forget about it until spring.



Merlin covers are manufactured completely with U.S.A.-made materials and components that exceed industry standards, our covers feature unsurpassed thread and webbing strength, brass anchors and powerful stainless steel tension springs. Each showcases the latest technology to protect your pool against the relentless forces of nature, as well as the unpredictable nature of children and pets.

Merlin safety covers feature an ingenious strap and anchor system that allows for easy installation and removal using a specially designed tool. Even with its professional protection, our mesh covers are lightweight, making them easy to install, remove and store. Others attempt to copy our innovation; a Merlin cover is the real deal.

AUTOMATIC SAFETY COVERS

We make it strong. We make it easy.™
COVERSTAR



The automatic choice for safety, savings and convenience!

A backyard swimming pool is the ultimate source of family fun! But when it comes to children and pets, it is also the source of safety concerns. No parent can be watching over the pool every minute. No fence or alarm can prevent a child from getting access to an unsupervised pool. A Coverstar automatic safety pool cover can!

Strong protection – at the touch of a button!

Simply flip a switch, and your Coverstar automatic safety cover will create a barrier over your pool that no child or pet can penetrate. Custom-built to fit your pool perfectly and manufactured from best-in-class materials, Coverstar is the best protection available for your family and your pool investment!

Save on heat, water, electricity, and chemicals.

A Coverstar cover acts as a passive solar heater, increasing the temperature of your water by 8 to 10 degrees. It also reduces evaporation of water as well as consumption of chemicals.

Less time cleaning...more time enjoying!

A Coverstar cover keeps dirt and debris out of your pool. Time spent cleaning out dirt and leaves and putting in new chemicals is almost eliminated!



Mechanism engineered for unmatched reliability.

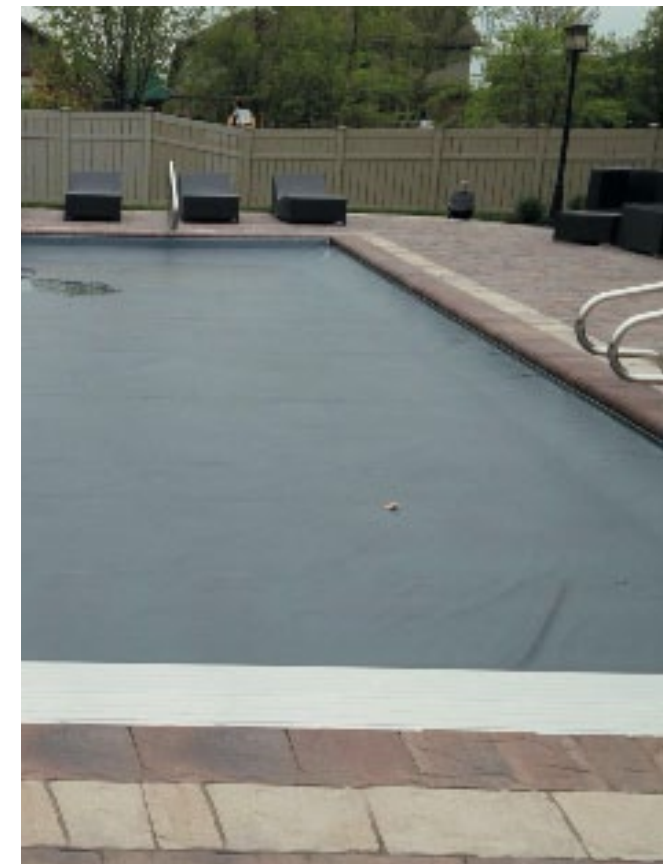
Our unique mechanism is engineered with heavy-duty components and with ropes and pulleys that are stronger than any others used in the industry. The extreme precision of the machined and laser cut parts allows for smooth operation and many years of hassle-free use.

Heat-sealed webbing for double the strength!

Most automatic cover manufacturers sew webbing material wrapped around rope to the cover. With this method, the webbing often fails before the fabric does. Coverstar uses an exclusive, patented process to heat seal webbing around a polymer bead and weld it to the cover in one step.



Independent lab tests show Coverstar's webbing is over twice as strong as competitive webbing sewn to a cover!



EQUIPMENT



EcoAdvantage items are those that which carry the industries best energy efficient ratings. Every one of these products can lay claim to saving energy, water, reducing noise, maintaining air quality, or delivering combinations of these environmental benefits.

Perhaps most compelling of all is when you link these 'best in class' choices into a single green system. Not only do you deliver individual products that are more environmentally responsible than other choices, there can be synergistic effects as well.



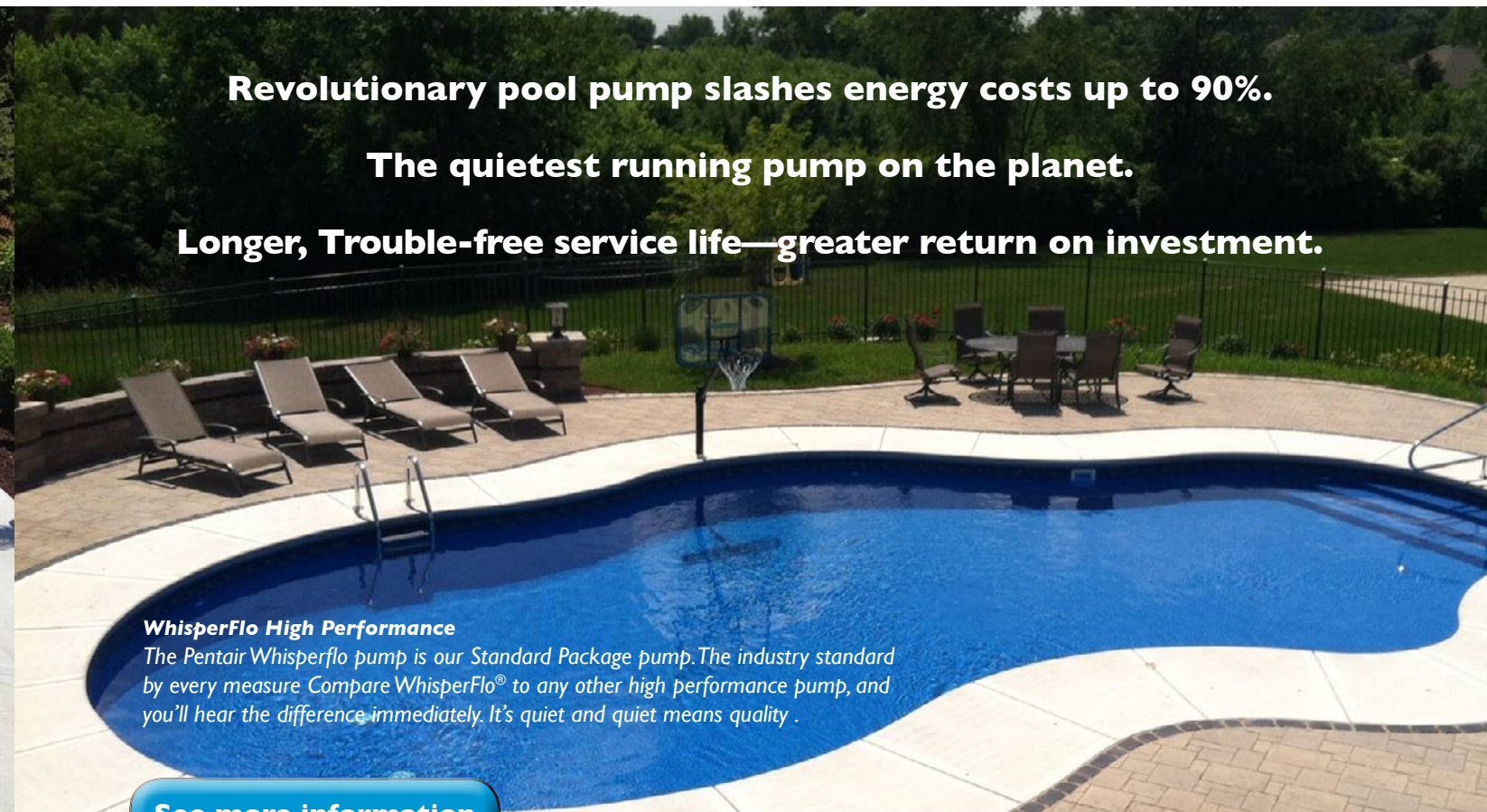
IntelliFlo VSF
(Standard on all installations)



Standard pool pumps can consume as much energy as nearly all other home appliances combined — sometimes costing more than a \$1000 per year! IntelliFlo Variable speed pumps can cut energy use up to 90%!!



[See more information](#)



Revolutionary pool pump slashes energy costs up to 90%.

The quietest running pump on the planet.

Longer, Trouble-free service life—greater return on investment.

WhisperFlo High Performance

The Pentair Whisperflo pump is our Standard Package pump. The industry standard by every measure. Compare WhisperFlo® to any other high performance pump, and you'll hear the difference immediately. It's quiet and quiet means quality.

[See more information](#)





FNS[®] PLUS FIBERGLASS D.E. FILTER

RECOMMENDED
FILTER



FNS[®] PLUS



THE FILTER THAT DELIVERS CRYSTAL CLARITY

Filtering with diatomaceous earth (D.E.) gives you water that really sparkles. That's because D.E. filters remove the tiniest of contaminants—particles as small as 5 microns (an average grain of sand is 1,000 microns). Even though these particles can't be seen individually, collectively they greatly affect water clarity.

[See more information](#)

NOTE: Cartridge and Sand filters are available upon request.



The MasterTemp heater's easy-to-read controls make system operation and monitoring simple. Pool and spa temperatures can be pre-set and controlled with the push of a button. A digital display indicates the water temperature, and five LED lights give you system status and let you know if the heater needs service.

Rotating digital display means more installation options and easier access to view operating information

Easy to install or retrofit in even the tightest space — models from 175M to 400M BTUs — all measure 21" L x 21" W x 28" H

Rustproof, tough composite exterior for long life

Available in natural gas and propane models



BEST-IN-CLASS ENERGY EFFICIENCY

- High efficiency rating makes these heaters extremely economical to operate. If your pool heater is more than 5 years old, chances are a MasterTemp heater could quickly pay for itself in utility bill savings.
- Optimized fuel/air mix provides superior efficiency and faster heat up.

CERTIFIED FOR LOW NO_x EMISSIONS

- In fact, our heaters outperform current industry standards for air pollution exhaust.

[See more information](#)



POOL AUTOMATION



Convenient control through a wireless remote

INTELLICENTER CONTROL SYSTEM FOR POOL AND SPA

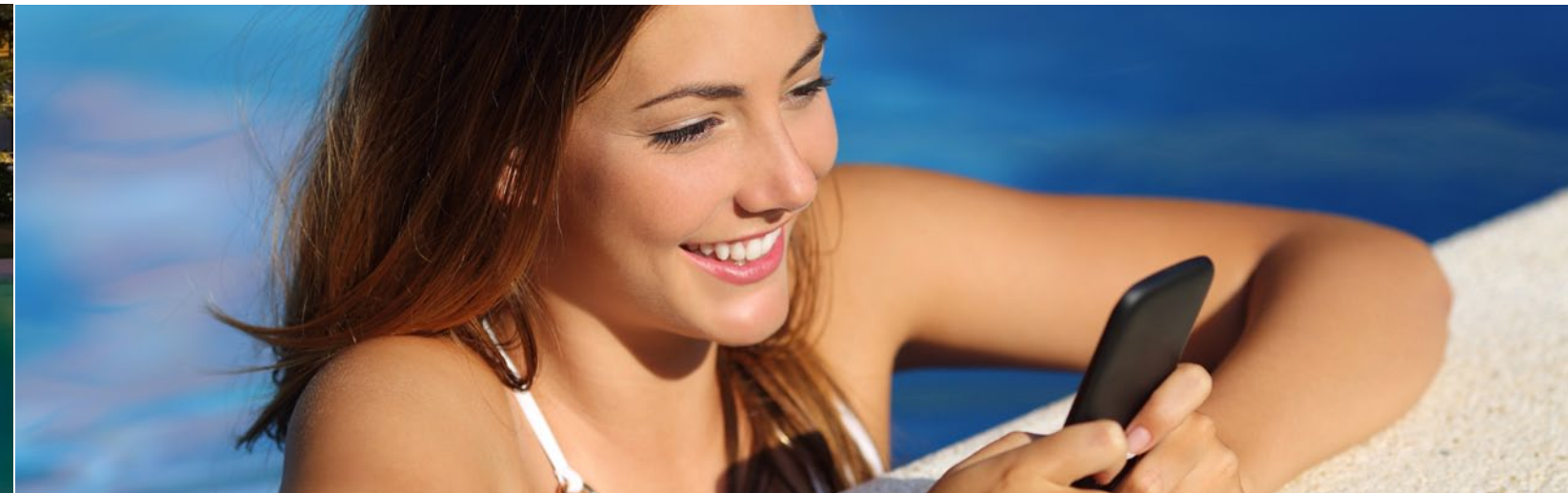
The IntelliCenter Control System for Pool and Spa is the latest automation innovation from Pentair. Easily and intuitively manage the features of your pool and/or spa from anywhere in the world with IntelliCenter's remote access and built-in connectivity for the ultimate in convenient control.

- Enables mobile access and smart home control for added convenience
- New color touchscreen interface provides clear, intuitive display
- Optional indoor control panel and wireless remote
- Allows for remote temperature control so pool or spa is ready to use when you are
- Provides real-time email alerts
- Controls spa jets, lights and light shows, blower, water features, etc.
- Interfaces with iOS®, Android® mobile devices, Apple Watch® and Amazon Echo®, enabling owners to check their pools status remotely



[See more information](#)

It's like putting pool or spa operation on cruise control.



WHO SAYS POOL AUTOMATION HAS TO BE COSTLY AND COMPLICATED?

Scheduling and controlling the operation of pool and spa equipment and related poolscape accessories is now blissfully automatic, simple and affordable. IntelliCenter Pool and Spa Control Systems eliminate the inconvenience of repeated trips to the equipment pad, memorizing operating sequences, opening and closing valves and resetting time clocks and thermostats.

THE ULTIMATE CONVENIENCE IN POOLSIDE CONTROL RIGHT AT YOUR FINGERTIPS



The ScreenLogic Interface Kit is included with IntelliCenter and you can control everything from pool and spa temperatures, to jets, lighting, water features and more—right from your favorite Apple device. The ScreenLogic interface gives you access to your pool and spa's operation from practically anywhere, anytime using your PC or Mac computer, iPad, iPhone or iPod touch mobile digital device. Whether you're across the deck or around the globe, pool control has never been this easy.

[See more information](#)



SANITIZING SYSTEMS

CARIBBEAN'S POOL & SPA MAINTENANCE PROGRAMS



A LITTLE OF THIS



A LITTLE OF THAT



A LOT OF THIS



iCHLOR

The iChlor Salt Chlorine Generator features smart technology that provides built-in intelligence for unmatched convenience and control. Just add salt to generate all the chlorine your pool needs. iChlor produces a steady stream of pure chlorine for softer, silkier pool water. It's the easiest and most effective way to maintain a sparkling clean pool.

[See more information](#)



KINGTECH XL PRO

The XL Pro by King Technology utilizes the Pool Frog Mineral System and chlorine tablets for an easy and effect way to sanitize your pool while saving you time and money.

[See more information](#)

DECK JETS & LAMINARS

Deck Jets

A gentle sprinkling that provides optimum misting, an elegant stream that creates an arching water line, and a flute that provides an unique water spray. In addition to visual delight, the Deck Jet produces an aural backdrop of gentle, calming sound. The deck jet unit is recessed into your pools concrete apron and comes with three different spray nozzles. With the use of common hand tools and minimal mechanical knowledge you can switch from one nozzle to the next to alter your pools fountain features.



Laminars (set of two)

The laminar effect is a high-tech illusion. The water is so well controlled it creates a continuous stream of water that hits the pool water virtually sound-free and splash-free. Optional color-changing fiber optics produce a breathtaking evening light show. Comes with 2 flush mounted deck units. For optimum performance, water height will be between 3'-5' high.

Sold separately

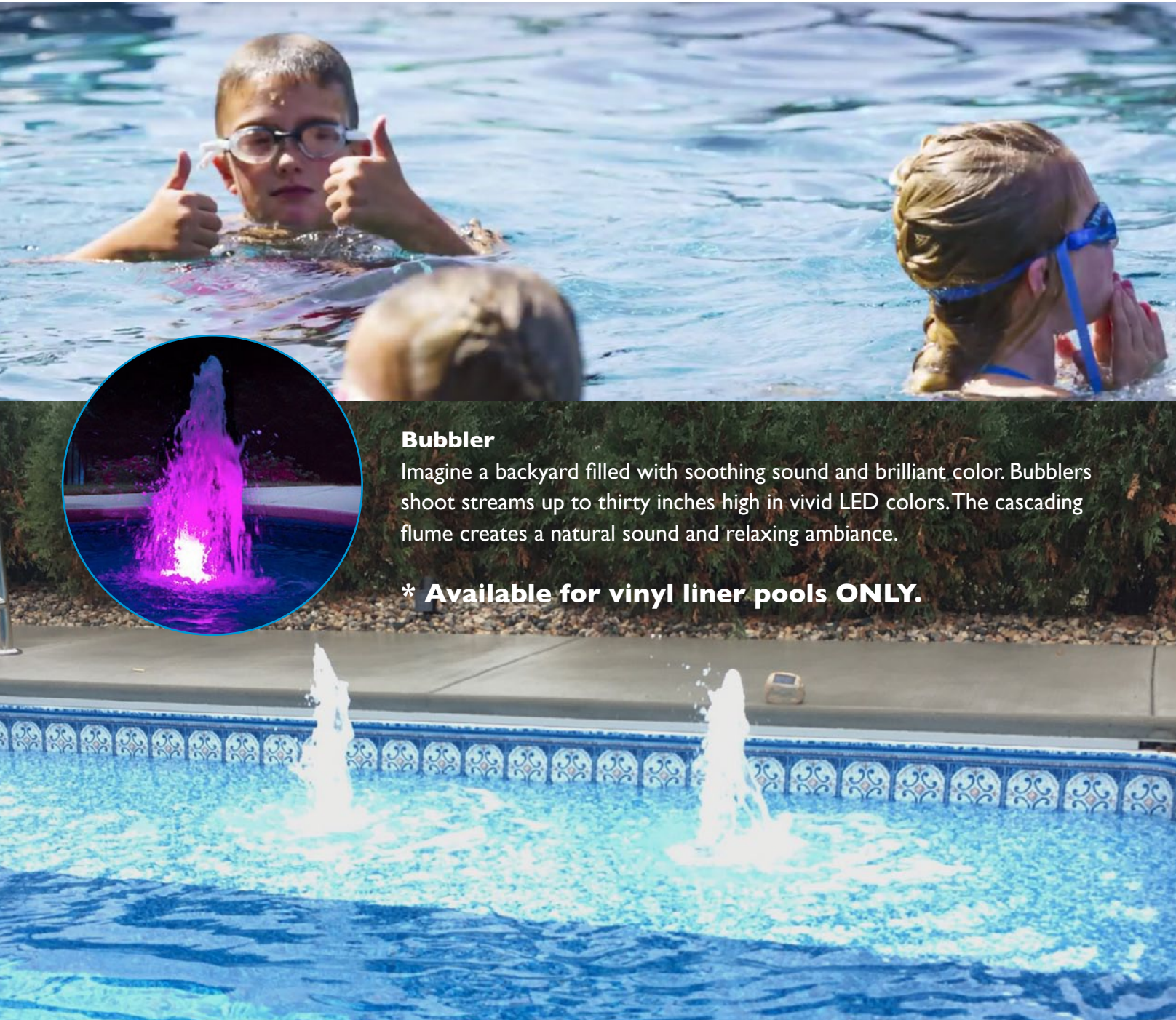


The performance of all of the above water features can and will be affected by the amount of wind present during the water features operation. The statements above are made assuming no wind is present at the time of viewing. Caribbean Pools cannot be held responsible for poor water feature performance due to the presence of wind.

[See more information](#)



BUBBLERS



Bubbler

Imagine a backyard filled with soothing sound and brilliant color. Bubblers shoot streams up to thirty inches high in vivid LED colors. The cascading flume creates a natural sound and relaxing ambiance.

*** Available for vinyl liner pools ONLY.**

SPORTS & EXERCISE



BASKETBALL

The deck mounted hoop has a stainless post and coated rim for plenty of games throughout the summer.

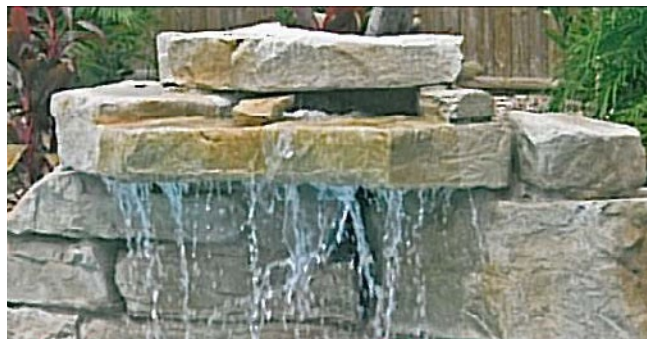
STAINLESS DECKVOLLY

- (2) 60" x 1.90" diameter stainless steel posts with escutcheon rings
- Comes with anchor covers
- Red, White, & Blue colored volleyball

ANCHORS ARE NOT INCLUDED WITH THIS UNIT.



WATER FALLS



28" Modular Waterfall

The spillways on this 28 inch high model create a softer sound and the clear sheet of water is refreshing. Shown here with the optional rock coping.



4 Piece Ledger Modular Waterfall

The four piece ledger waterfall is very popular because water flows over irregular ridges and it looks great at both a low flow rate and with a lot of water flow. Shown here with optional rock tile at waterline.



3 Foot Modular Waterfall

Six boulders make up this waterfall with a more dramatic sheet waterfall and a mini-grotto for the kids to play under. Another example is on the cover.

This unit measures 3' high and 7' across. Shown here with the optional rock coping that forms a handhold at waterline.



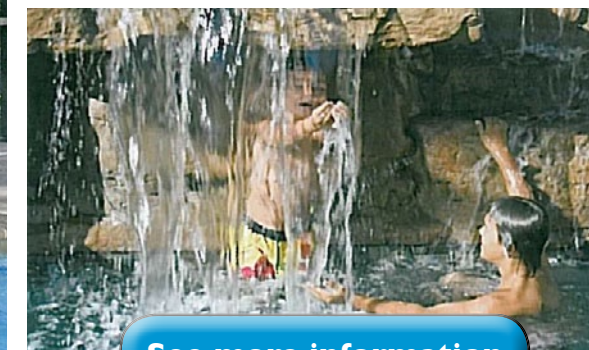
4 Foot Double Modular Waterfall

Bigger is better if you have a good sized pool. This double waterfall is 4 feet high, 12 feet wide and will provide years of poolside enjoyment, even if you never go swimming.



Loveseat Grotto

A grotto is a great place to hang out. The water falls three directions on this model to bring sparkle and a robust sound to any swimming pool. This waterfall is 5 feet high, and approximately 13 feet wide. Shown here with optional rock tile.



[See more information](#)



THE TREADMILL FOR YOUR POOL



FAMILY FUN

Create your own exciting water park (lazy river effect, choppy water for boogie boarding)



EXERCISE & THERAPY

Provides a mild to vigorous workout with endless swimming or walking in place—with no stress on joints or bones



PERFECT FIT

Accommodates installation in limited space and varying pool designs



COST EFFICIENT

The Badu SwimJet offers many different packages in a wide price range to satisfy a variety of exercise styles and budgets

With a Badu SwimJet System from Speck Pumps, any pool can become an aquatic workout center. You'll burn calories, strengthen muscles and soothe body aches by swimming against a gentle or increasingly insistent current. You control the degree of workout you want — building body, mind and spirit.



[See more information](#)

SLIDES



TURBO TWISTER

Over 7' tall at the top of the runway with a massive curve and thrilling dip for maximum sliding fun. Enclosed ladder and molded handrails for maximum safety. High-flow Grand Rapids water delivery system. We include a water supply line with a control valve at the equipment set and at the slide location to make operation easier. **Weight Limit = 275 lbs** (User must be 48" or taller to use slide with adult supervision.)



[See more information](#)



SLIDES



TYPHOON

7'- 4" tall at the top of the handrails. High-flow Grand Rapids water delivery system. Enclosed ladder and molded handrails for increased safety. We include a water supply line with a control valve at the equipment set and at the slide location to make operation easier.

Weight Limit = 275lbs



DIVE BOARDS

HOT TUBS & SPAS

CPI Flyte Deck II dive stand with 8' board - CPI Standard



8' dive board. Available in standard white or upgrade to one of the colors shown below at an additional charge. Includes additional concrete needed. (Pool depths, slopes and size must conform to national dive standards)



White



Taupe



Pewter Gray



Gray Granite



Pebble



Silver Gray

[See more information](#)



T-7 DIVING SYSTEM

- Unique 7' diving board
- Optional 10.25" Edgewater™ waterfall available – runs on as little as 450 GPH (7.5 GPM)
- Manufactured with advanced composite materials
- Choose from 9 colors

(Pool depths, slopes and size must conform to national dive standards)



Tan



Gray



Seashell



Starry Night



Autumn Sun



Cappuccino



Fashion Gray



Mont Blanc



Pebble

[See more information](#)



Caribbean Pools not only offers great pool packages, we also carry a wide variety of hot tubs that are sure to ease that aching back. Choose from our extensive collection of free standing, self-contained inground, or spill-over style spas to complete your backyard oasis.

Royal 9' 8" x 7' 8" Depth: 3' 4" Ships from CA, IL, LA, NC, TN, TX, WV		
Royal Spillover 9' 8" x 8' 6" Depth: 3' 4" Ships from CA, IL, LA, NC, TN, TX, WV		
Shasta 6' 11" x 6' 11" Depth: 3' Ships from CA, IL, LA, NC, TN, TX, WV		
Shasta Spillover 6' 11" x 7' 9" Depth: 3' Ships from CA, IL, LA, NC, TN, TX, WV		

RELAX
IN YOUR VERY
OWN POOLSIDE SPA



Choose your spa from one of these industry leaders:



HOT TUBS & SPAS



Our precision engineering is evident in every detail of every hot tub we sculpt, derived from a thirst for knowledge and a love of the latest technology. With over 40 years of pushing the envelope of what a hot tub should be, we have integrated intelligence, utilized the most durable materials, and given you more features that give you exactly what you need.



Amore Bay® Model with Terracina™ Cabinetry Shown

Designed with the precision and quality for which Dimension One Spas® is known, our classic line offers a refined hydrotherapy experience in a design that complements any outdoor style.

[See more models](#)



Lotus Bay
Length 92" x Width 92" x Height 40"



WaterFall™ Spas

Our WaterFall™ Spas are actually three products in one!

- six person spa complete with hydrotherapy jets and heated water
- 12 or 25 jets for a total massage
- easy-clean skimmer
- durable acrylic shell
- available in Silver Swirl or Storm Cloud
- 5-year limited warranty

PoolMate™ Spas

The Fox PoolMate™ Spa is the perfect complement to your pool. This spa is designed to be located near your pool or anywhere in your yard.



[See more information](#)



ROUGH INS

Rough-ins are the opportunity for partial work to be completed during the initial construction with minimum impact to the surrounding area that allows you to add a slide, waterfall, or cups for basketball/volleyball at a later date. (Just to name a few)

SLIDE

We will run up to 100' of a 1 1/2" flexible PVC water line from your equipment set to a future slide location. Includes valve and plumbing.

WATERFALL

We will run up to 100' of a 2" flex PVC water line from your equipment set to a future waterfall location. Includes valve and plumbing.
(depending on size of a waterfall, additional pump and suction lines may be needed)

ELECTRICAL OUTLETS

GFI protected electrical outlet installed within the pool deck area. (quoted on individual basis)

GAS LINE

For a future outdoor grill, fire pit.

ELECTRICAL LINE

For a future outdoor kitchen.

GRI DOOR ALARM

Door safety alarm that monitors entry to pool and spa areas. Remote sounders and shunt options. Built-in back-up battery capable. Low battery alert. A requirement in Homer Glen and Frankfort IL, installation extra.

ACTUATORS

Control water features with these actuators. Designed for use with 2-port and 3-port valves. Features maximum torque, 24VAC bi-directional motor. Requires additional room on circuit board.



GAZEBOS & PERGOLAS

Summerbrook
Outdoors



The DSP1

Traditional flat-topped pergola provides structure and shade while maintaining an open-air feel of the outdoors. Constructed with 100% Western Red Cedar which ages beautifully and is naturally resistant to rot, decay and insect damage. The cedar we use is beautiful, versatile and sustainable.



The DSP2

The Tuscan pergola, defines your outdoor area leaving plenty of room for dining tables & chairs, conversation seating groups, and outdoor kitchens. Can either be the main focal point or set to one side for an intimate gathering area.



The DSP3

The pavilion pergola with a metal roof option provides protection from the elements and a large shade island. The gentle slope of the roof-line is angled at a 4/12 pitch with an overall height of 10'-12' at the peak depending on the size of the pergola.

[See more information](#)

OUTDOOR FIREPLACES

Summerbrook
Outdoors



The DFP1

Our coziest wood burning outdoor fireplace.

The DFP2

A compact wood burning outdoor fireplace with a 30" fire box that can fit into almost any design.

The DFP3

A mid-size wood burning outdoor fireplace with a 36" fire box and an attractive stepped chimney detail.

The DFP4

Our largest wood burning outdoor fireplace with a 36" fire box and flowing proportional lines.

All of our outdoor fireplaces are solidly-built using a FireRock™ masonry core, high temperature fire brick lining and cultured stone veneer. Gas log starters or gas log sets can be added as an upgrade.

[See more information](#)



OUTDOOR KITCHENS

Summerbrook
Outdoors



The DS1

The compact footprint of the DS1 outdoor kitchen fits easily on smaller decks and patios.

The DS2

The DS2 outdoor kitchen island fits into smaller spaces while providing seating for 2-3 people.

The DS3

With an 83" dining ledge, the DS3 outdoor kitchen island can replace a dining set and offer guests a perch to interact with the cook.

The DS4

The DS4 is an all-in-one outdoor kitchen island and fire table. This island packs a powerful entertaining punch as both an outdoor kitchen and fire table all-in-one.

The DS5

The DS5 is a large, L-shaped, outdoor kitchen island with counter seating for up to 7 people. Component side is big enough to accommodate additional drawers, doors and other components.

[See more information](#)



Big Green Egg

The Ultimate Cooking Experience



Precise Temperature Control

Grill, smoke and bake on your EGG at exact temperatures by easily adjusting the patented air flow systems. You have total control over temperature at your fingertips, maintaining accuracy within a few degrees! The Made in USA temperature gauge provides precise readings to 750°F/ 400°C. Many indoor ovens cannot match the accuracy of the EGG's temperature control!



See more information



CARING FOR YOUR POOL



Our on-site technician will show you during your at home instructional how to care for & operate your swimming pool.

MAINTENANCE PACKAGES

Each pool's personality varies. We have a maintenance plan to fit each type. Contact us for a quote. 800-589-POOL or maintenance@caribbeanpools.com.

2x Week Full Service Maintenance: This one is for the well enjoyed pool, when you just want to float!

One Time / Vacation Maintenance: This one requires payment for the visit at the time of scheduling.

See more information



AUTOMATIC POOL CLEANER

KREEPY KRAULY®
BY PENTAIR



PROWLER® 920 ROBOTIC INGROUND POOL CLEANER



All-Surface Deep Cleaning
Powerful, High-Speed
Scrubbing Brush



**Fast and Easy
Debris Removal**
Top-Access Filtration Basket



**Select from Large or Fine
Debris Filtration Cartridges**
Dual Filtration Options



**Programmable Daily
Cleaning Schedules**
Built-In Weekly Timer

The Prowler 920 Robotic Inground Pool Cleaner offers a superior level of cleaning for inground pools. Your pool's walls and floor get deep-scrubbing and powerful vacuuming action, all the way up to the waterline. Just plug it in and watch it work. Prowler 920 will get your pool sparkling clean and ready to enjoy in practically no time.

Advanced scanning software ensures floor and walls are fully covered using the most efficient route. The Prowler automatically navigates around obstacles and quickly returns to its cleaning pattern.

The Prowler 920 gives your pool powerful cleaning with the unmatched convenience and efficiency of robotic cleaners. It's built to minimize effort, so you can spend more time enjoying your pool with family and fiends.



[See more information](#)



IN-STORE INSTRUCTIONAL



**We offer free in-store
water testing**



Over the past 25 years, BioGuard pioneered and continually refined the science of water analysis with their exclusive, cutting-edge water-testing tools ALEX® and BioGuard Smart Lab™. ALEX is revolutionary software that analyzes test results, figures proper treatment and yields product suggestions and instructions. Smart Lab is the actual unit, a photometer that reads the water reagent disks. Visit our retail store for a water test and to receive personalized instructions for maintaining your pool or spa.





FINANCIAL OPTIONS

Need help with financing your backyard oasis? We work with very reputable institutions that will be glad to help.



[See more information](#)



[See more information](#)



[See more information](#)





Schererville

Caribbean Pools & Spas
36 E US Hwy 30
Schererville, IN 46375
Phone: (219) 322-8550



Mokena

Caribbean Pools & Spas
18911 S. Wolf Road,
Mokena, IL 60448
Phone: (708) 479-5900



Valparaiso

Caribbean Pools & Spas
3900 Murvihill Road
Valparaiso, IN 46383
Phone: (219) 299-2997



www.caribbeanpools.com
800-589-POOL
OR text us at 219-322-8550

